

# Farmers' knowledge of livestock and rangelands management in the Gauteng Province, South Africa

**Ngoako L Letsoalo<sup>1,2</sup>, Hosia T Pule<sup>1</sup>, Julius T Tjelele<sup>1</sup>, Ntuthuko R Mkhize<sup>1</sup> and Khanyisile R Mbatha<sup>2</sup>**

<sup>1</sup>Agricultural Research Council, Animal Production Institute;

<sup>2</sup> Department of Agriculture and Animal Health, University of South Africa

# Introduction

---

- Emerging livestock farmers own 5.5 million of the 14.1 million cattle in South Africa.
- Heavy stocked
- Poorly managed
- Drought prone

# Introduction cont...

---

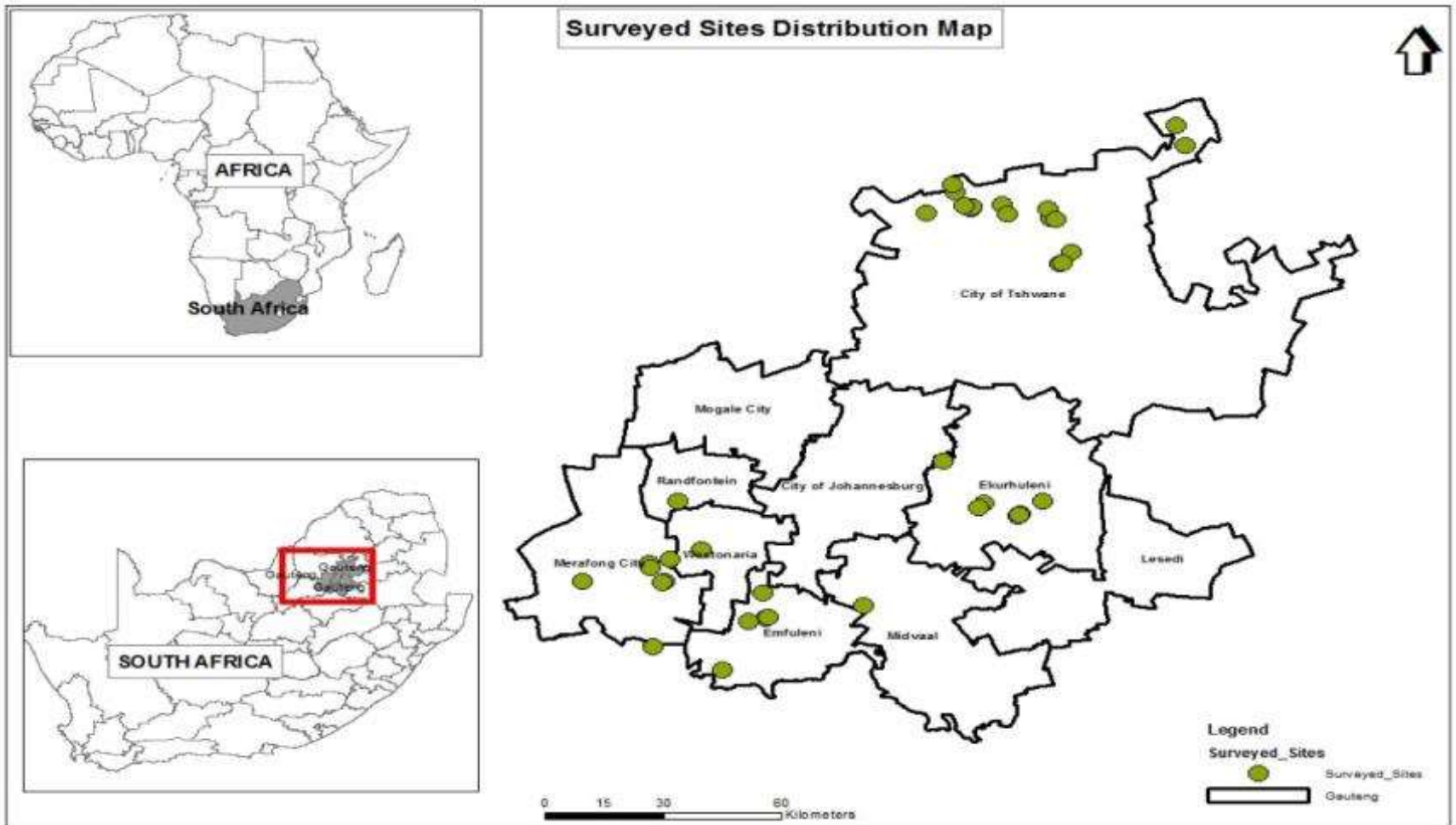
- Shortage of forage during dry season
- High losses of livestock during drought years
- ✓ Compliment scientific knowledge and contribute to improved understanding and sustainability of both rangelands and livestock productivity.

# Objectives

---

- 1) Document indigenous knowledge of emerging farmers on livestock and rangeland management,
- 2) The perceived constraints related to livestock-rangeland management and,
- 3) Drought coping strategies implemented by farmers.

# Study area



# Semi- structured Questionnaire

---

- Demographic profile
- Knowledge of livestock
- Knowledge of rangeland management
- Drought coping strategies

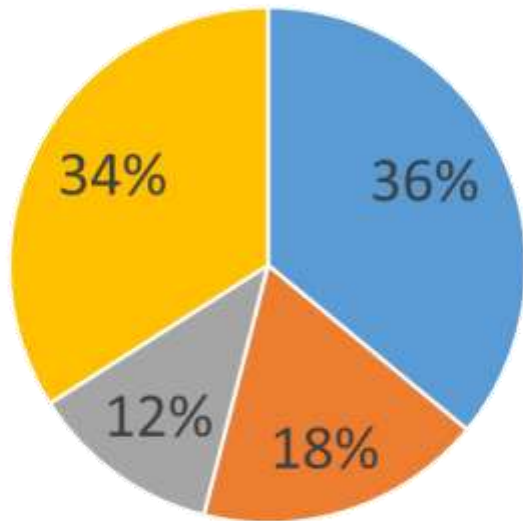
# Results and Discussion

<i>Respondent</i>	<i>Description</i>	<i>Measure</i>
Gender (%)	Male	64.8
	Female	35.2
Age (%)	<30	3.5
	31-40	12.2
	41-50	19.8
	51>	64.5
Education (%)	No education	4.4
	Primary	7.3
	Secondary	41.5
	College	29.8
	University	17
Agricultural training (%)	Formal	30.8
	Non-formal	69.2
Farming experience (%)	<5	27.4
	6-10	36.7
	11-15	9.8
	>16	26.1
Member of the farmers organisation (%)	Yes	64.8
	No	35.2

# Results and Discussion

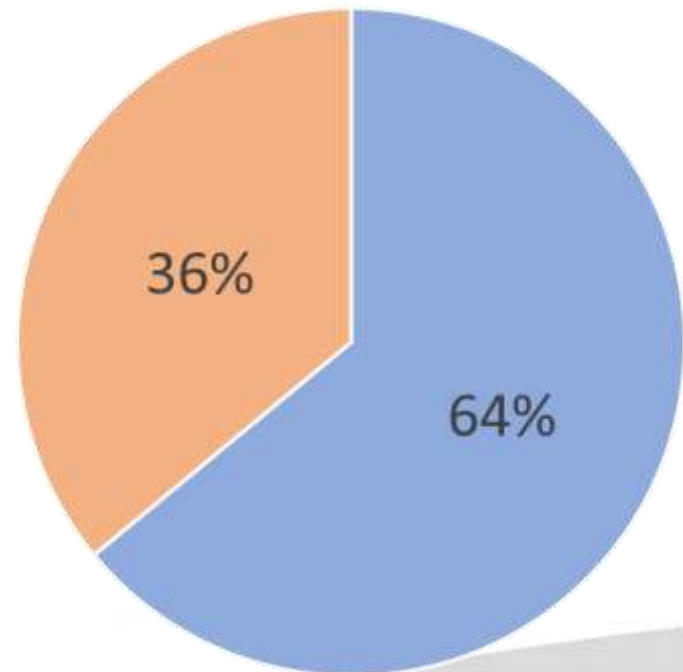
**Cattle 34%; Cattle + Goats 12%; Cattle + Sheep 16%; Cattle, Sheep + Goats 38%**

Land ownership



■ Communal land ■ Own Land  
■ Leased ■ Land Reform

Farm type



■ Farm ■ Communal land



# Results and Discussion

---

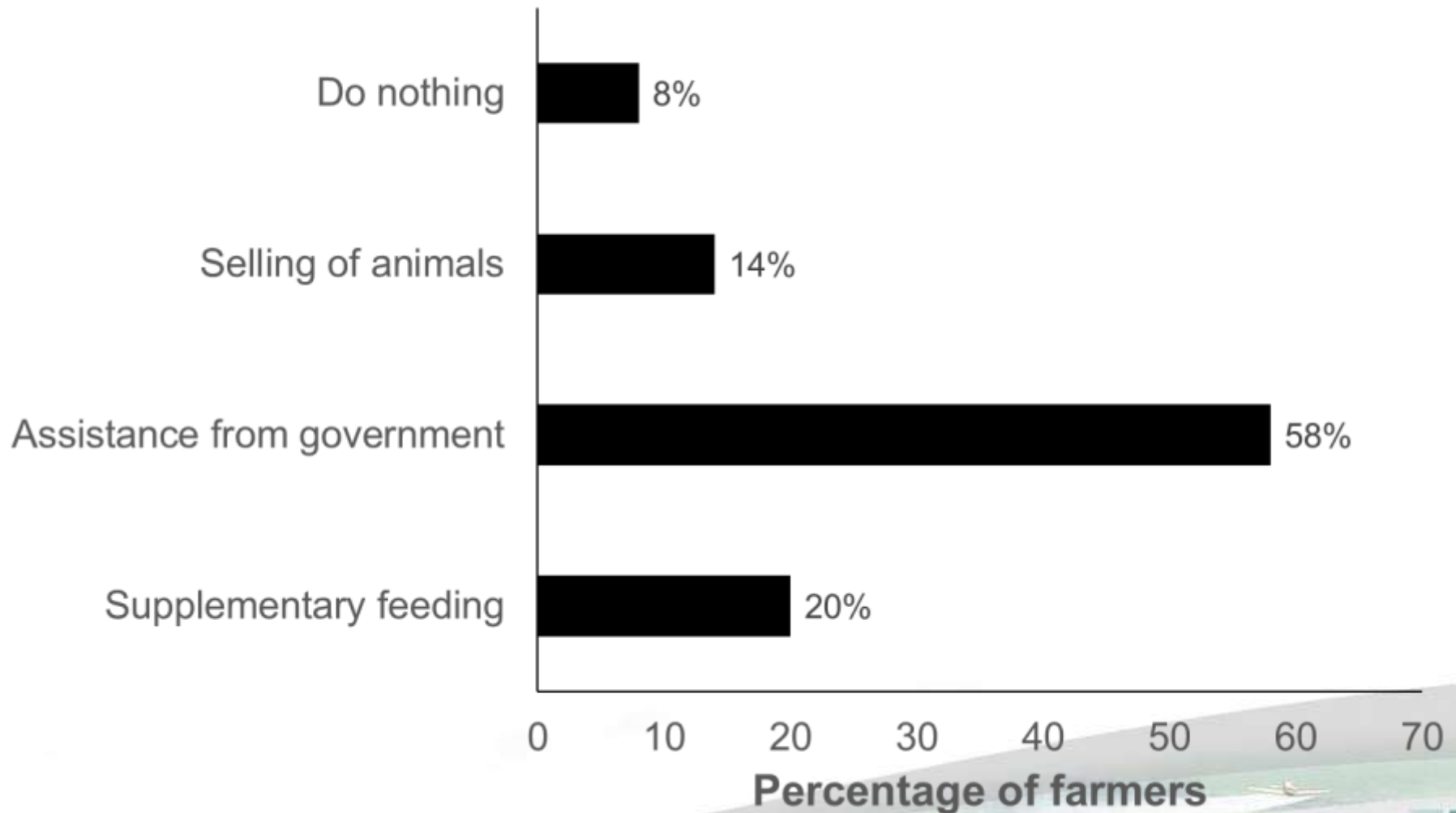
Questions/Responses	% in Farms	% in communal + farms
I know the breeds I keep		100
I know diseases		29
I buy medicines		77
I have management plan	62	
I know my breeding & calving seasons	84	

# Results and Discussion

Questions/Responses	% in Farms	% in communal + farms
I know grasses on the grazing areas/farms		56
I do not monitor rangeland condition		100
Do not have rangeland management plan	100	
I do not know grazing capacity and stocking rate	100	
I do not have fodder conservation plan	98	

# Results and Discussion

---



# Results and Discussion

Major constrains	% of farmers
Feed/ Forage shortage	60.0
Water scarcity	17.2
Land ownership	11.0
Animal diseases	8.0
Theft	2.0
Drought	1.7

# Conclusion

---

- Lack of veld management principles
- Heavily relaying on the government assistance

# Recommendations

---

- There is a need for training of farmers.
- Government need to include farmers in development planning.

# Acknowledgements

---

- Farmers
- Students
- GDARD