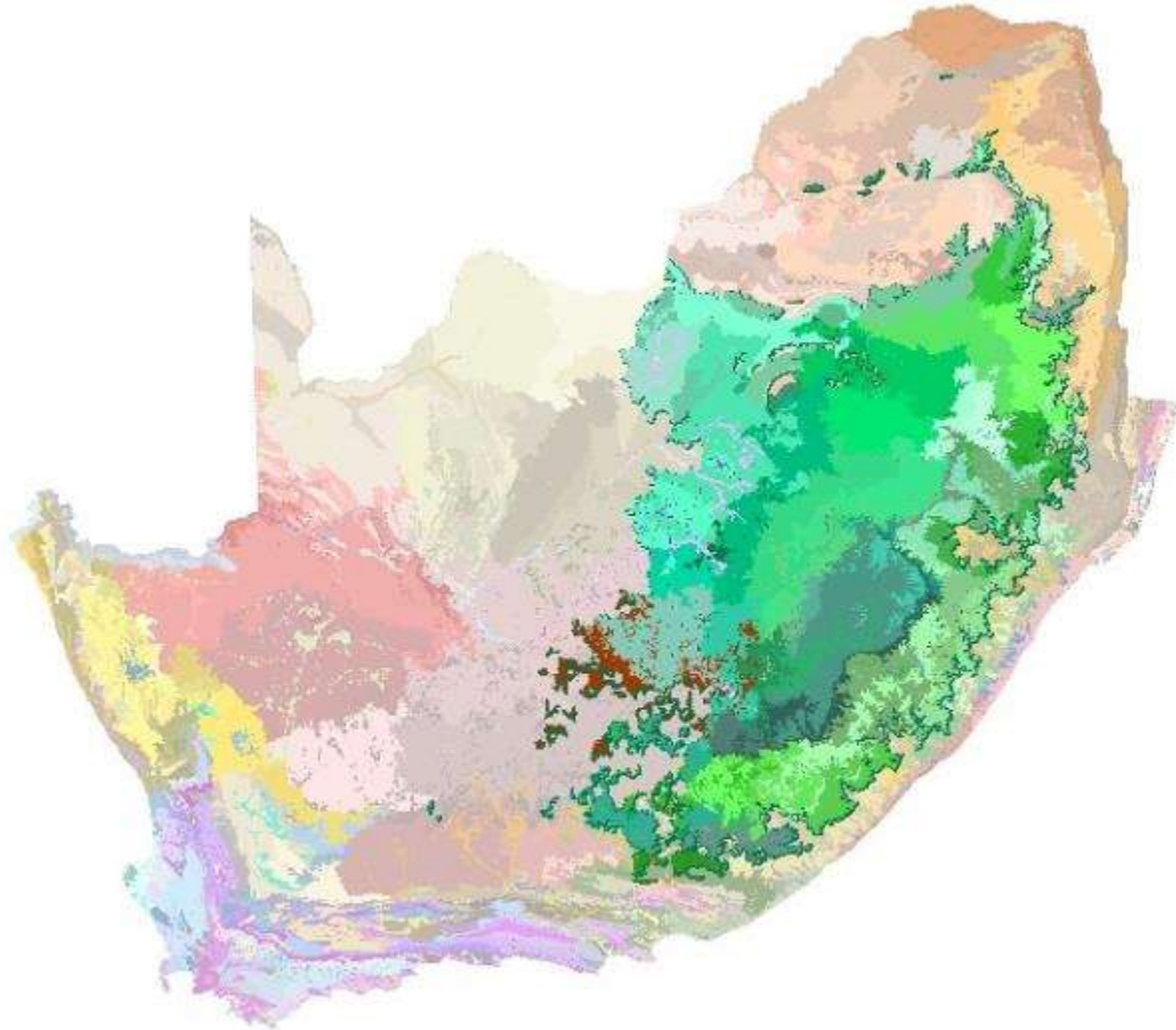


# VEGMAP of South Africa: Gaps and opportunities in the Grasslands



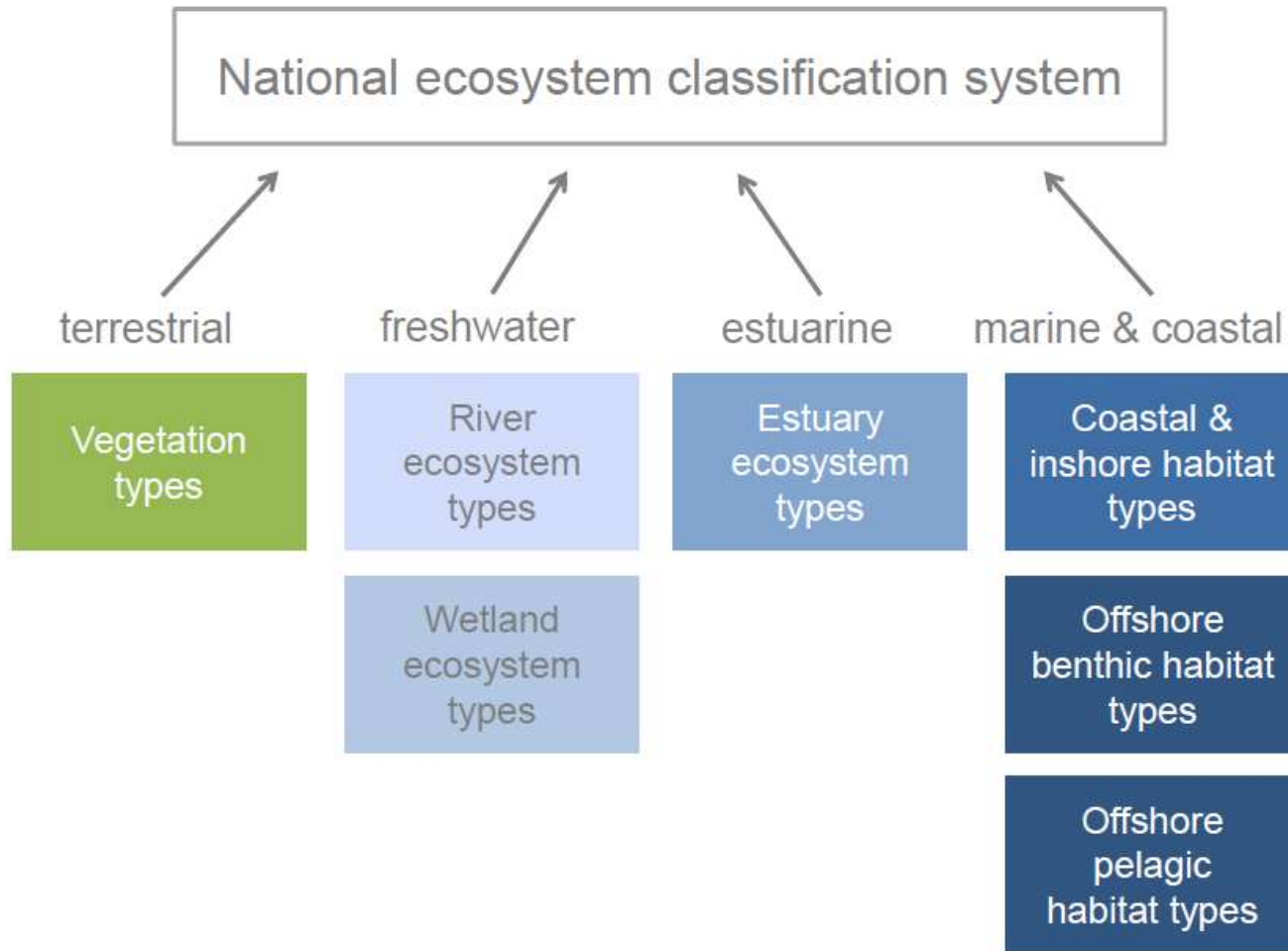
MY CAR



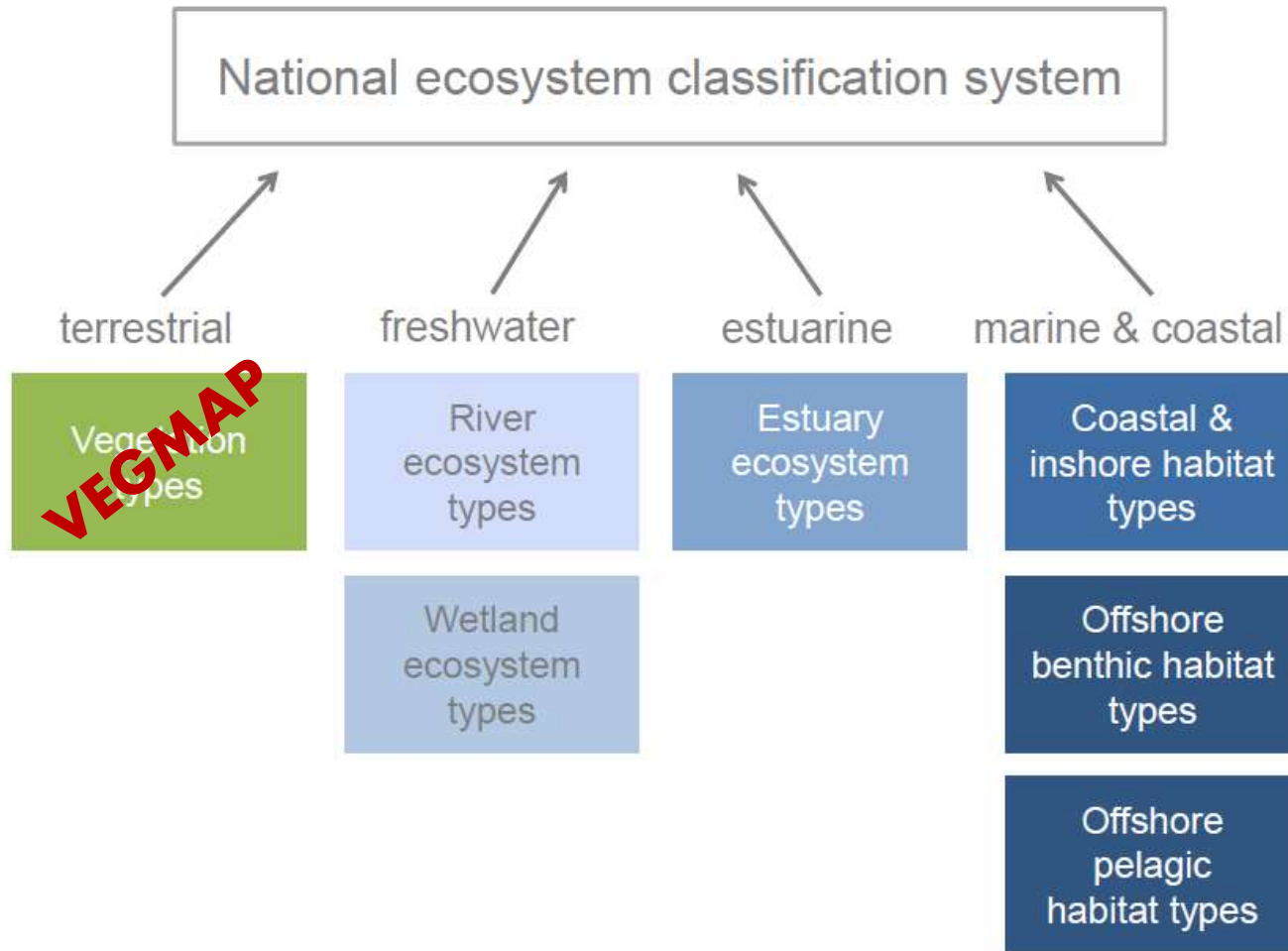
I ❤️ ~~Eynbos~~ Grasslands



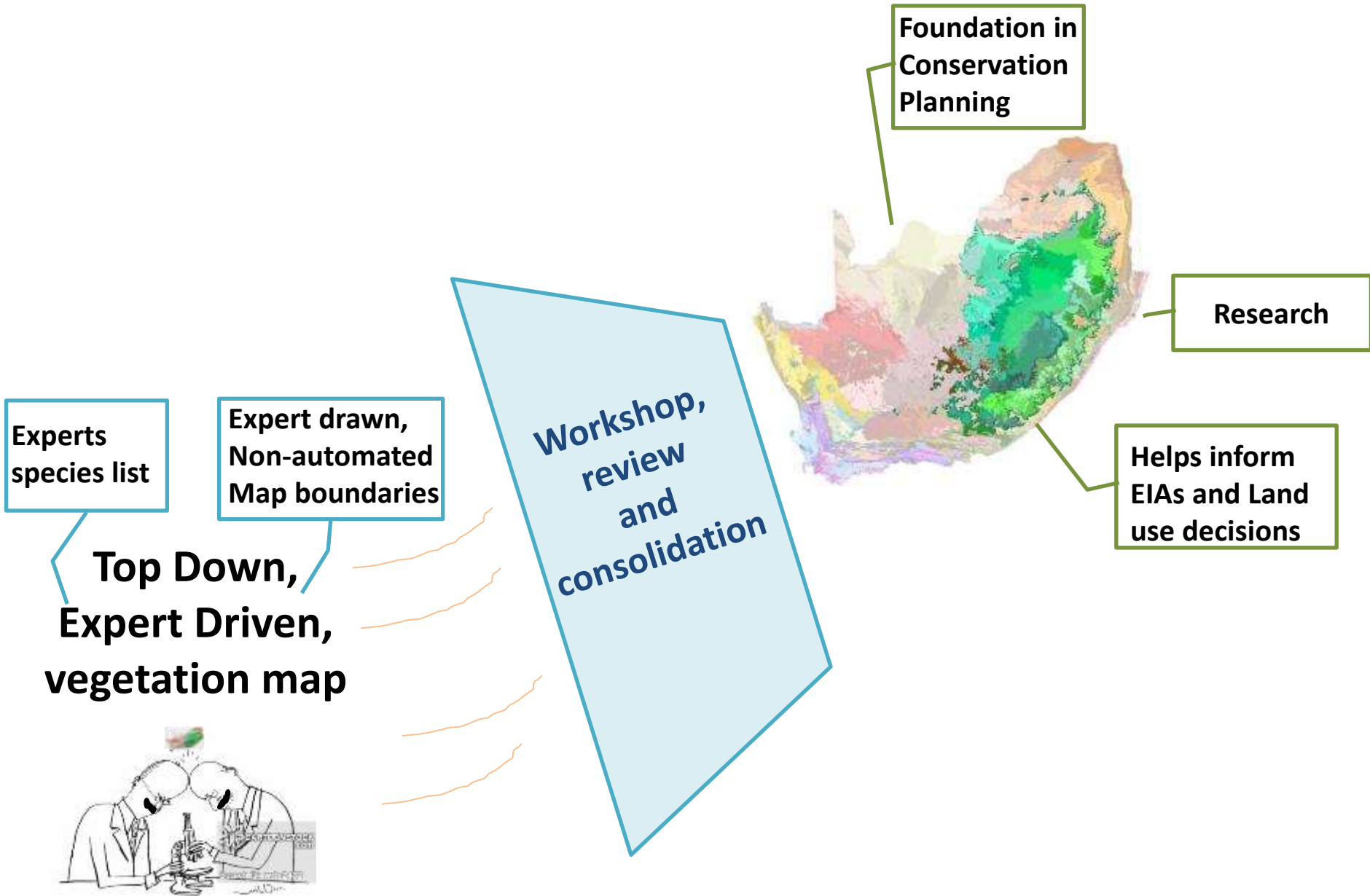
# Role of the VegMap in the National Biodiversity Assessment (NBA) 2018



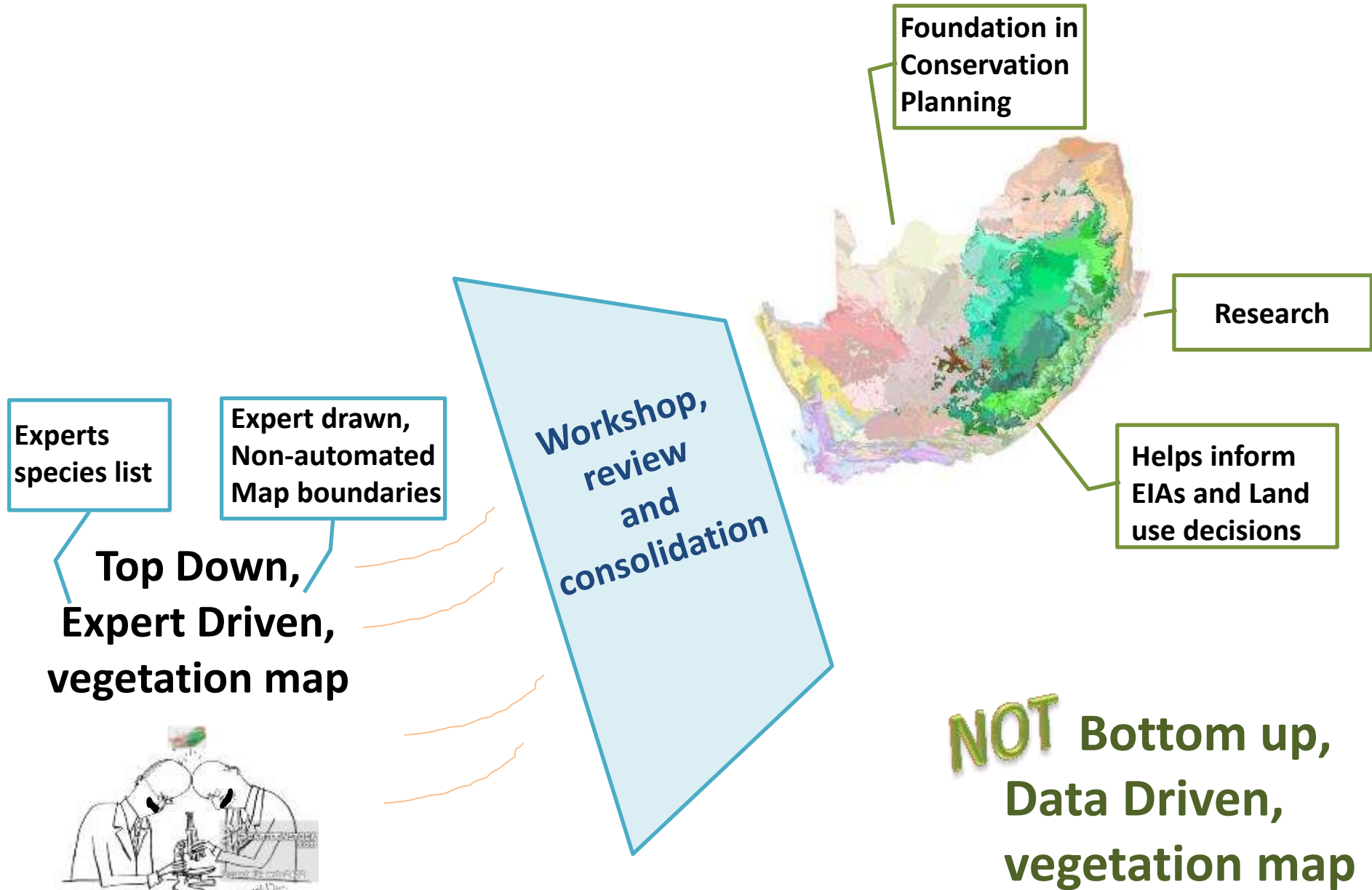
# Role of the VegMap in the National Biodiversity Assessment (NBA) 2018



# Construction and use of VEGMAP



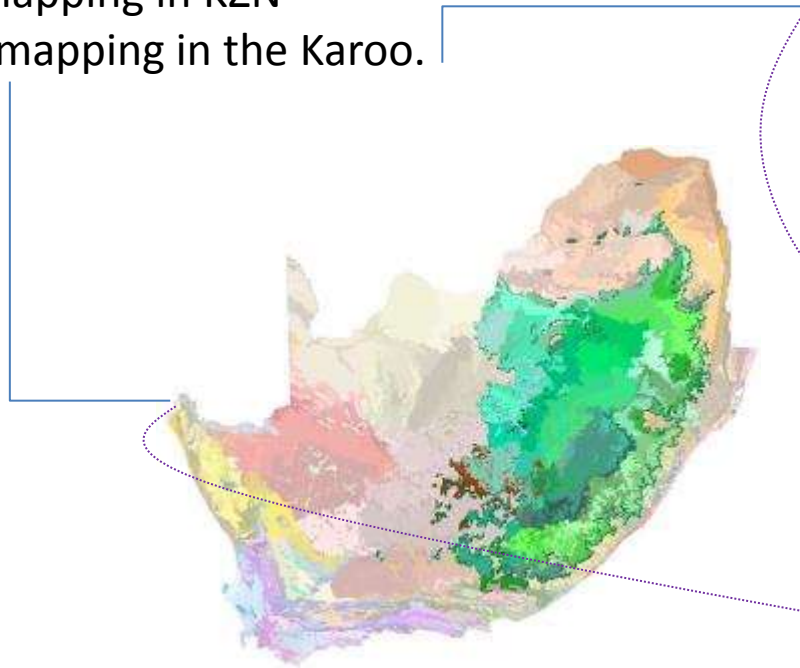
# Construction and use of VEGMAP



# Consequences of a Top-Down approach

## Inconsistent map resolution

e.g. fine scale mapping in KZN  
vs coarse scale mapping in the Karoo.

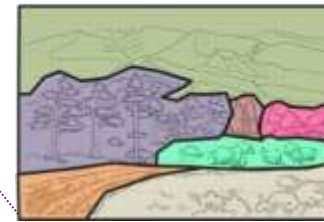


## Different hierarchical levels

presented as a single level, e.g.  
communities in grasslands but  
groups of communities in fynbos.

1 Type = 1 Community

1 Type = 7 Communities



Land management  
decisions

## Unique species:

between Vegetation Types  
Dominant species

# Refining the VEGMAP

1.

NBA 2018

NBA

Revision

Update

Update

Revision

Update

Update



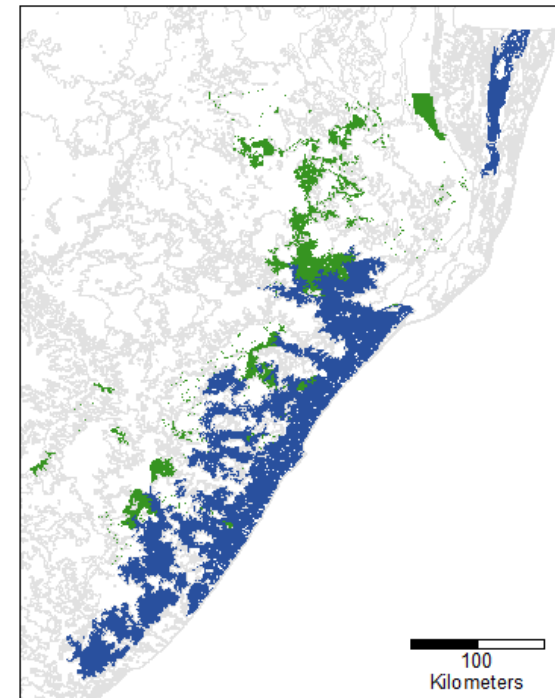
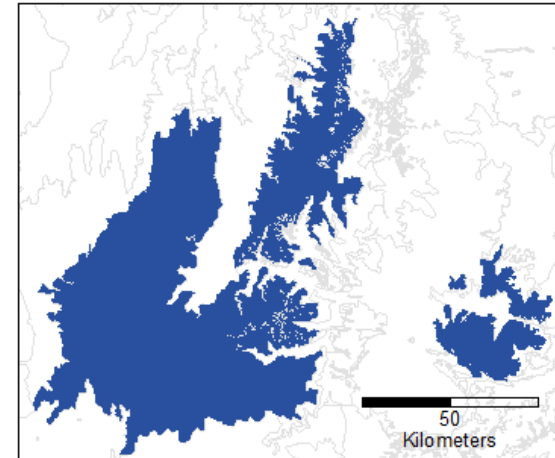
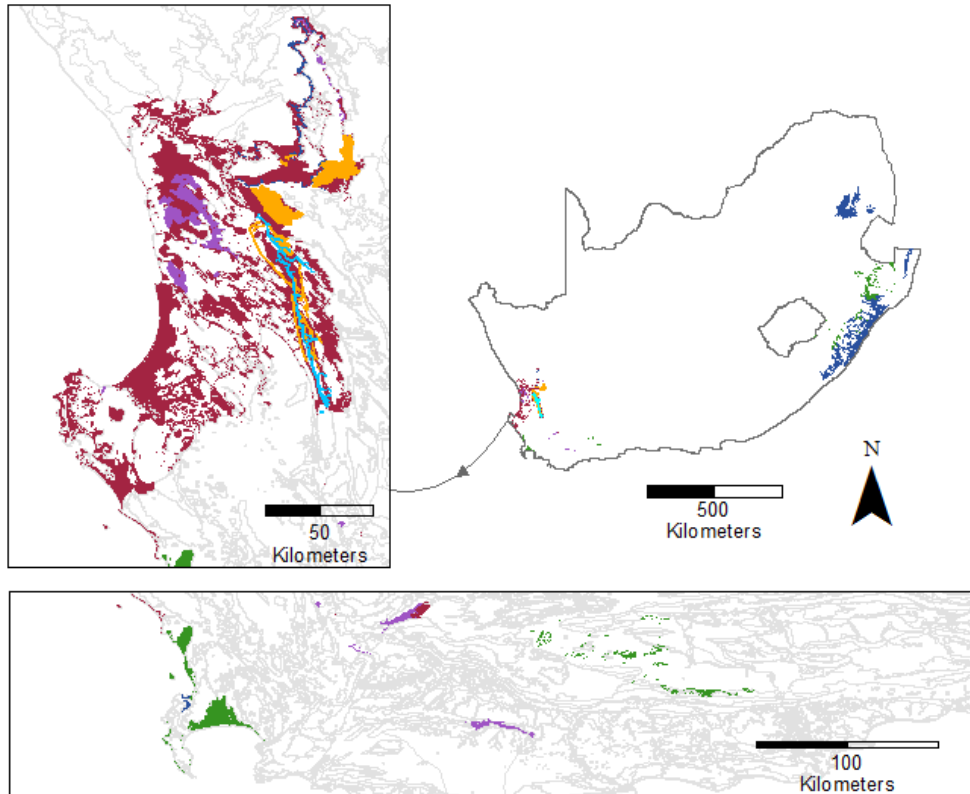


# How do we currently refine the VEGMAP?

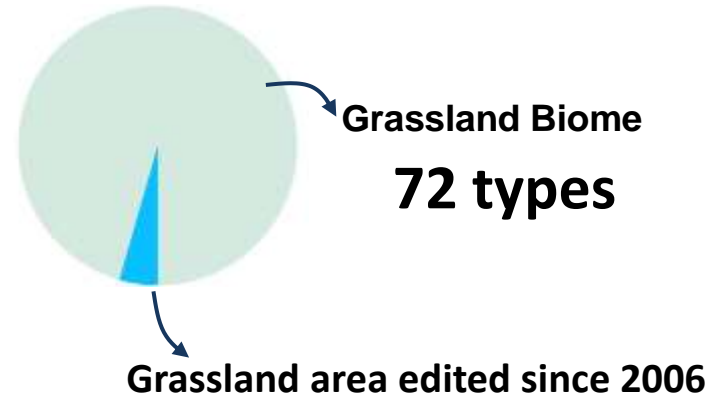
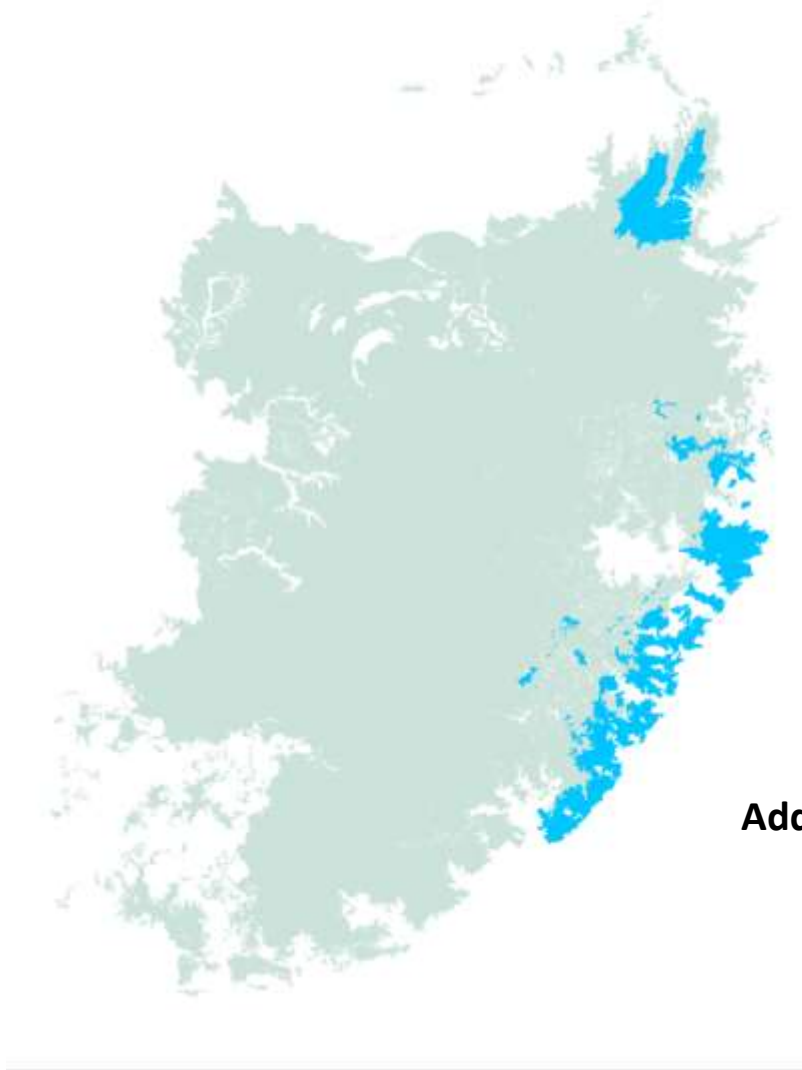
## Areas updated since the 2006 VEGMAP

### Nature of edit

- Addition: Subtype
- Addition: Type (2009)
- Addition: Type (2012)
- ▨ Addition: Type 2009 Deletion: Type 2012
- Boundary Shift (2009)
- Boundary Shift (2012)



# Changes to the grassland biome in VEGMAP



Grassland Biome

**72 types**

Grassland area edited since 2006

**15 types**

4.7 %

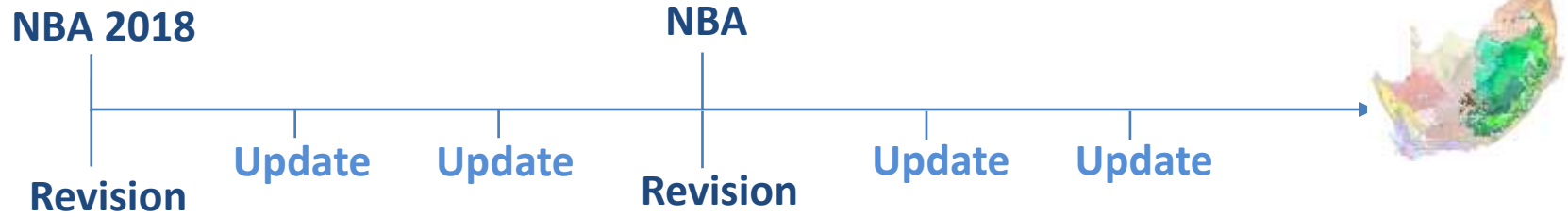
Additional Grassland area (previously Savanna) edited

**4 types**

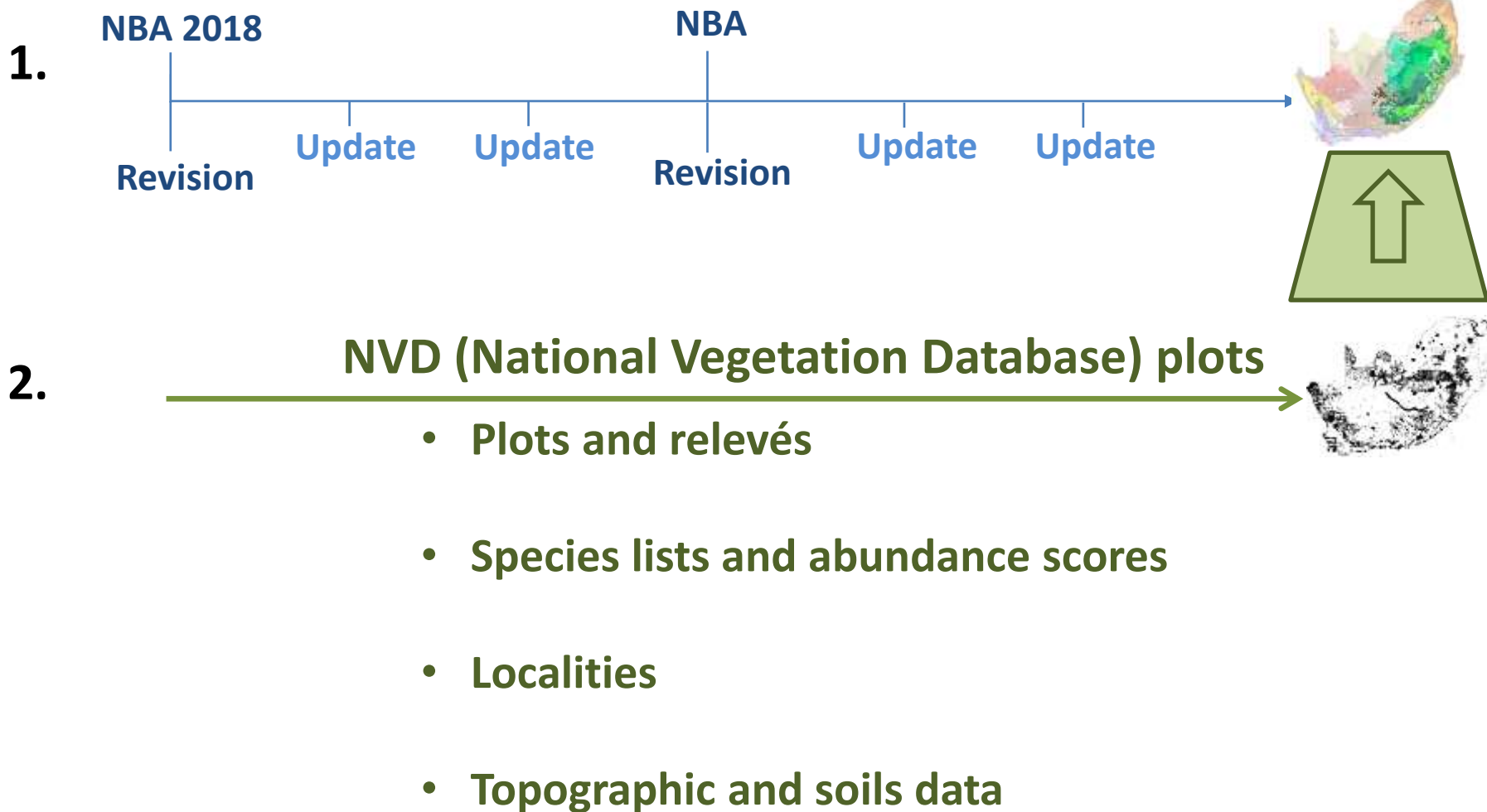
2.9 %

# Strengthening the VEGMAP with species data

1.



# Strengthening the VEGMAP with species data



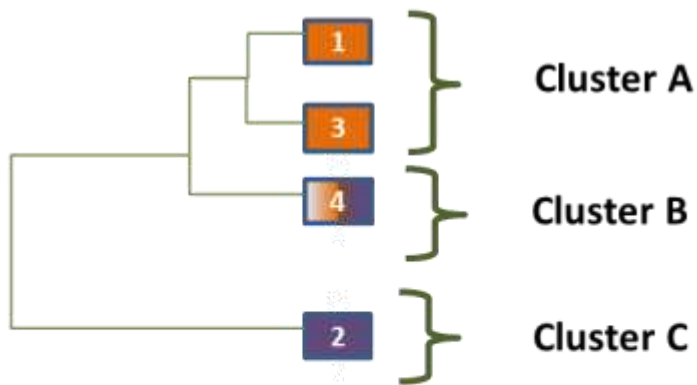
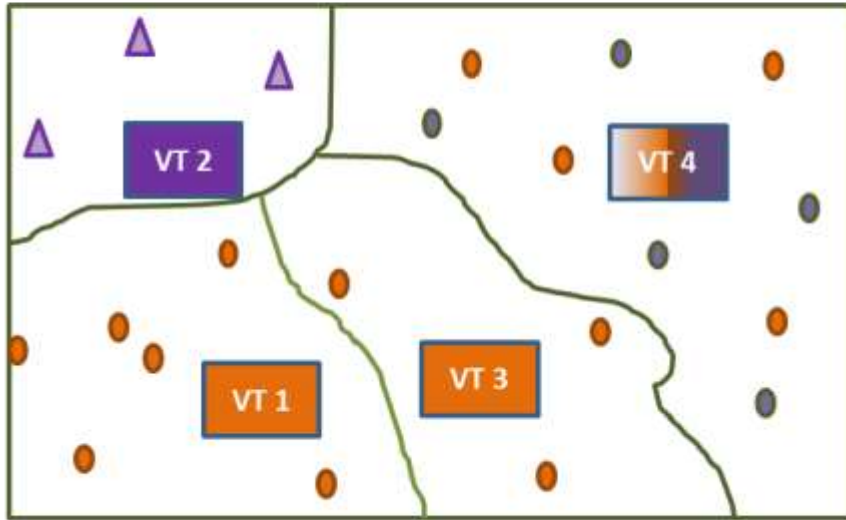
# The National Vegetation Database

- **NVD (National Vegetation Database) plots**



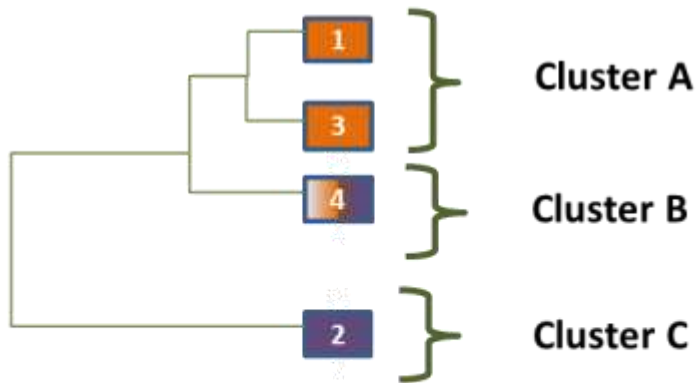
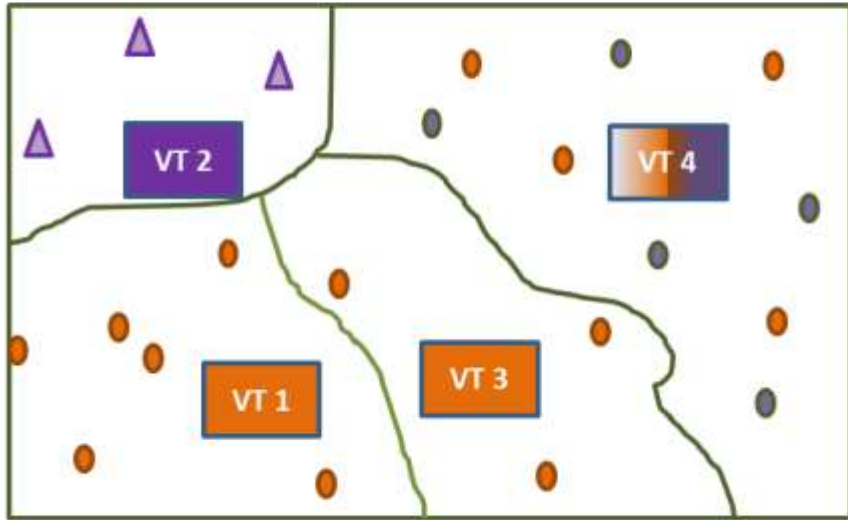
# Two possible approaches to using species data

Classifying existing types within  
a biome/ bioregion

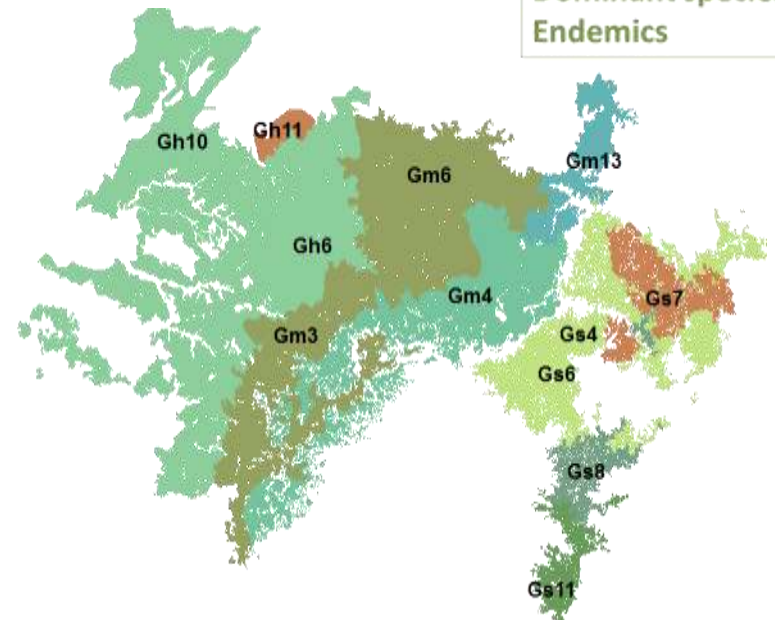
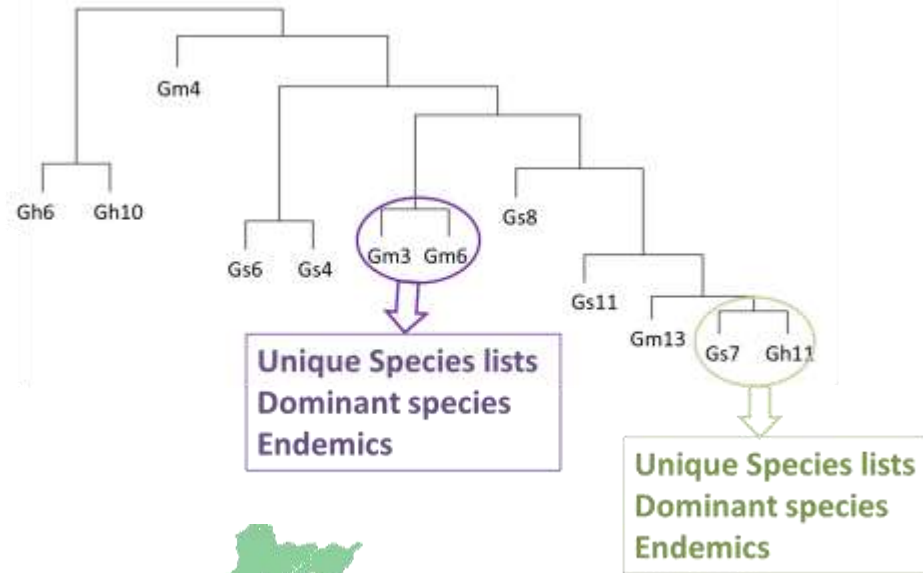


# Possibilities using the species data

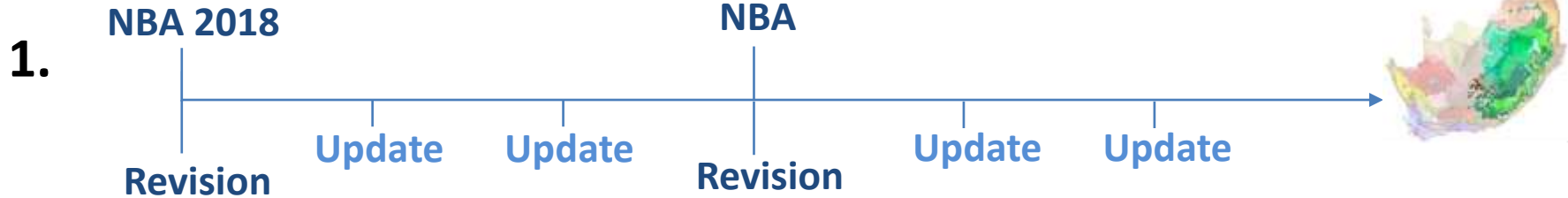
Classifying existing types within a biome/ bioregion



12 vegetation types that have >100 NVD plots



# Refining the VEGMAP with species data: Exploring the possibilities

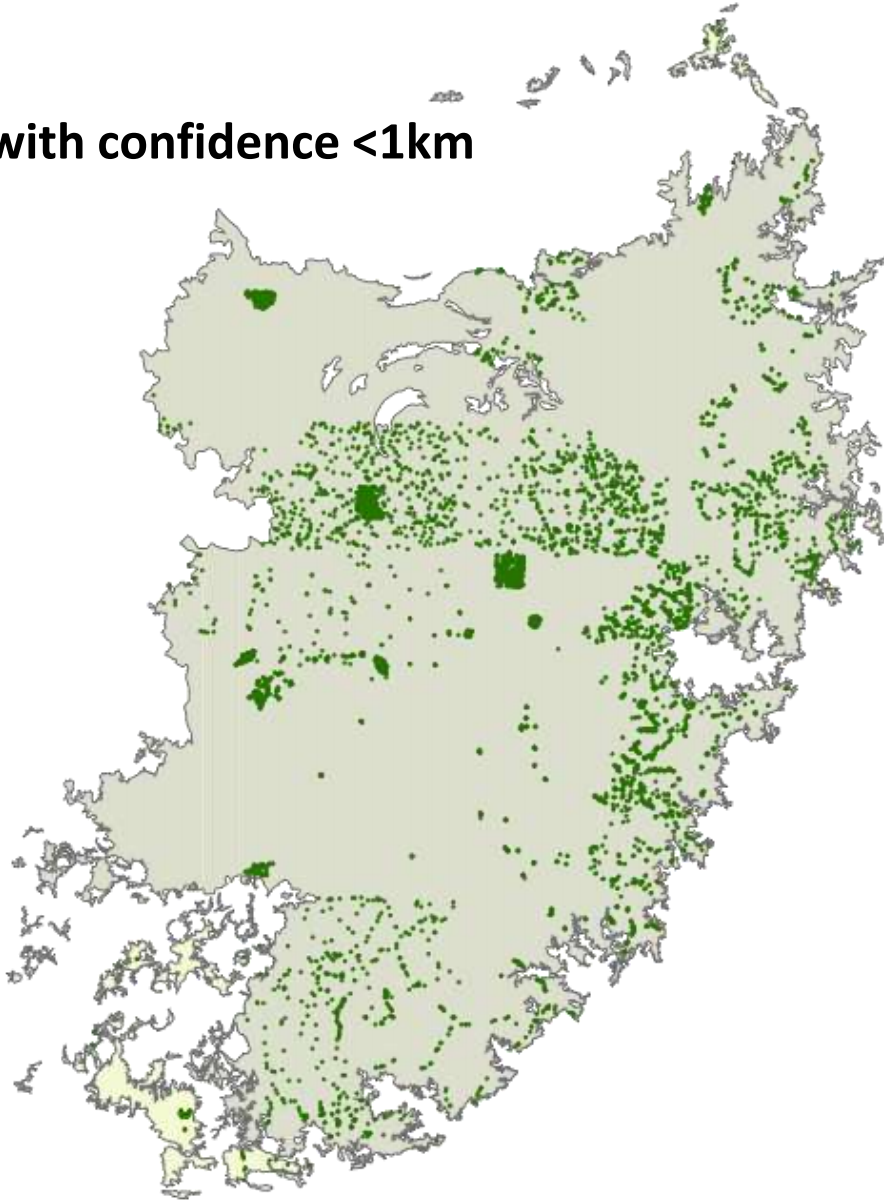


- 2.
- NVD (National Vegetation Database) plots**
- 
- Strengthened understanding
  - Refined species lists
  - Refined lists of endemics
  - Unique species/type
  - Decision-making for proposed changes to types



# NVD in the Grasslands

- Plots with confidence <1km



- **6372 plots**
- **17% no plots**
- **43% < 21 plots**

Help us strengthen the VEGMAP using NVD

[vegmap@sanbi.org](mailto:vegmap@sanbi.org)



