

Website
www.grassland.org.za



Publication Editor: Pieter Swanepoel
 pieterswanepoel@sun.ac.za
 Tel: +27 21 808 4668
Assistant Publication Editors:
 Janet Taylor
 Abubeker Hassen

Administrator: Freyni du Toit
Admin Assistant: Barbara Styan
Layout & Design: Cathrine Versfeld

President: Leslie Brown
Immediate Past President: Tony Palmer
Vice-President: Julius Tjelele
Honorary Secretary: Michelle Tedder
Honorary Treasurer: Justin du Toit
Scientific Editor: James Bennett
Publications Editor: Pieter Swanepoel
Website Editor: Paul Gordijn
Public Relations Officer: Melvin Swarts
Co-opted Member (Fundraising): Erika van Zyl
Additional Member (Grassroots): Janet Taylor
Additional Member (Grassroots):
 Abubeker Hassen
Additional Member (Website):
 Florence Nherera-Chokuda
Chairperson - Trust: Rina Grant Biggs
Chairperson - PAC: Leslie Brown
Chairperson - COC 51st: Pieter Swanepoel
Chairperson - COC 52nd: Mike Peel
Administration: Freyni du Toit

Printed by: LT Printers - Pietermaritzburg
Published & Distributed By
 The Grassland Society of Southern Africa

Contents

50th Annual GSSA Congress

- 6** Celebrating 50 years of Rangeland Ecology and Pasture Management in Africa
- 8** Presidential Address 2015. 50 Years of the Grassland Society of Southern Africa
- 12** Mid-Congress Tour Marianhill Landfill and Conservancy
- 14** Mid-Congress Tour Dairy and Pastures
- 17** Congress Delegates Revisit Famed Ukulinga Trials
- 19** GSSA Congress 50 Awards



Features

- 50** Karoo invasion:
is history repeating
itself?
- 60** The impact of savanna
fires on Africa's rainfall
patterns



Regulars

- 5** Editor's Note
- 63** African Journal of
Range and Forage
Science Report from
the Editor-in-Chief

Awards

- 27** Grootfontein College of
Agriculture Student
Award
- 28** Learner that receives
GSSA award also wins
Gold at the Eskom Expo

News

- 30** A life of global impact on environmental science
- 33** Ecosystem Management
- 35** What South African farmers can do to protect endangered grassland birds
- 37** Stop bugging the bugs: the world as we know it would fall apart without them
- 44** SAEON launches Karoo Shale Gas Ecology Project
- 46** Farmers hold the key to nature conservation: let's treat them that way
- 48** UKZN Hosts Second PMA Agri-Food Career Fair
- 41** Havoc among bee pollinators - effects on agriculture and conservation

Editor's Note



Welcome to the fourth issue of Grassroots for 2015 – a special issue containing many reports from the half-centenary celebrations of the Grassland Society of Southern Africa. The first Congress was held in 1966 at the then University of Natal, Pietermaritzburg. The Society returned to its roots in 2015, with the 50th Annual Congress, which was hosted at the Royal Agricultural Showgrounds in Pietermaritzburg. Congratulations to the Organising Committee who made this Congress a memorable one.

Although this issue focusses on the Congress which had a historical thread throughout the programme, we also draw attention to the future by highlighting relevant research topics which require attention. The first is a news article which emphasizes the importance of protecting endangered grassland birds, and provides suggestions on what South African farmers can do to protect them. Another news article stresses the importance of bugs in ecosystems, and explains how the world as we know it would fall apart without them. Similarly, the research need on honey bees and the effect agriculture and conservation may have on it is also discussed in another news article. Throughout these articles, the big role farmers play in conserving natural resources is stressed.

You will also find two very interesting feature articles in this issue. The first is on Karoo invasion of sweet prickly pear and the second on the impact of savanna fires on Africa's rainfall patterns.

These are only a taste of what you'll find in this exciting issue of Grassroots, the last issue for this year. As this year draws to an end, we wish you a happy festive season and a prosperous 2016. Happy reading!

Pieter Swarepoel

Celebrating 50 years of Rangeland Ecology and Pasture Management in Africa

Kevin Kirkman
University of KwaZulu-Natal
kirkmank@ukzn.ac.za

The Grassland Society of Southern Africa is 50 years old! The first congress was held in Pietermaritzburg in 1966 at the then University of Natal in Pietermaritzburg, with 103 delegates. The 25th Congress was also held in Pietermaritzburg in 1990, with 123 delegates attending. In 2015, the Society again returned to its roots and the 50th Congress was held in Pietermaritzburg at the Royal Agricultural Showgrounds. The Showgrounds proved to be an excellent venue, and a total of 259 delegates attended the prestigious event. Of the 259 delegates, 231 were South African, 18 from other southern African countries, 6 from further afield in Africa and 4 from other continents. The Congress was strongly supported by the University of KwaZulu-Natal, Ezemvelo KZN Wildlife, the KZN Department of Agriculture and Rural Development and the Friends of UKZN Agriculture (an alumnus association) with the organizing committee drawn from those organizations.

The GSSA has held a 2 day Research Skills Workshop immediately preceding its annual congresses over the last few years, and once again a successful workshop was hosted with 55 delegates

attending. The Congress was opened with an insightful address by Professor Albert Modi, the Dean and Head of School of Agricultural, Earth and Environmental Sciences at the University of KwaZulu-Natal and the Chairman of the South African Agricultural and Life Sciences' Deans' Association. The opening plenary address was given by Professor Scott Collins from the University of New Mexico, and focused on grasslands and grassland research globally. He gave interesting perspectives on future research directions. Prof Collins is also a past president of the Ecological Society of America, which is celebrating its 100th year anniversary in 2015. At the opening "meet and greet" function, he presented an overview of the role of professional societies in science and in society at large. Professor Roland Schulze, from UKZN, gave a second plenary address focused on climate and man's impact on the climate, with a view to identifying future priority research areas. The scientific programme comprised several key focal points, including various aspects of veld and pasture research and utilization. It was pleasing to see an increased level of interest in pasture research.

50th Annual Congress

A successful Special Session (organized by the Endangered Wildlife Trust) was held to debate Holistic Resource Management. This was well attended, and stimulated some robust debate among delegates. A blog has been set up by Tapiwa Chatikobo and Heidi Hawkins to continue this debate*. Mid-congress tours were held to enable delegates view science in practice. These included a tour to visit pasture research sites at Cedara and several pasture based dairy farms in the Karkloof area, a visit to

a landfill conservancy to view successful ecosystem restoration and a visit to Ukulinga, the UKZN research farm, to view the 65 year old Veld Burning and Mowing Trial and Veld Fertiliser Trial. The Gala Dinner was a special event attended by several founder members of the Society, including Professor Winston Trollope, Professor Neil Tainton, Dr Rupert Jones, Professor Eugene Moll and Mr Peter Miller. The founder members all expressed appreciation for the manner in which the GSSA has adapted and survived, and continues to serve its members and society at large.



GSSA Past Presidents

*<http://www.plaas.org.za/blog/does-holistic-management-really-work-grasslands>

Presidential Address 2015 50 Years of the Grassland Society of Southern Africa

Tony Palmer
ARC-Animal Production Institute
palmert@arc.agric.za

Being the 50th year since the inauguration of the society, I would like to take a few moments to reflect on the contributions that the GSSA has made to the management and conservation of the rangeland resources of southern Africa. I have elected to use both these terms, because often they are viewed as in conflict with one another. A kind of ecological ying-yang. During the early years of my career, the livestock production sector was viewed with skepticism and in conflict with the objectives of conservation, where high biodiversity and fields of *Themeda triandra* were viewed as the desired state for all rangeland. It took a great many years before the realization that, with judicious management, both objectives could be achieved.

Today we witness the increased grassiness of the eastern Nama-Karoo and the Grassland biomes, reported on most recently by several members of the society but most eloquently articulated by Masubelele, Bond and Hoffman (2015). This change has important consequences for the livestock sector which is now faced with the opportunity to respond to the greater amount of grass biomass.

There has also been an increase in woody biomass throughout southern Africa. This has been documented in the special edition on bush encroachment which appeared last year. Since 1965, we have also witnessed the huge change in land-use which has accompanied the growth in the eco-tourism and formal conservation sectors. Many millions of hectares of rangeland previously under livestock production are now in the informal conservation sector. Land restitution since 1994 has also increased the area of land under the leasehold tenure system, and the management challenges that this change represents are dealt with in the special edition of the journal in 2013. In the planted pastures field, we have witnessed the development and release of several new cultivars that have been reported in the journal.

Membership

Since 1965, we have seen a radical transformation of the membership of the Society, and our membership now reflects the full diversity of people living in southern Africa. The number of members in 2014 was 399.

50th Annual Congress

Although membership has not changed very much in the year under review, the Society must remain constantly committed to recruiting new members. The discipline will always require new blood to enter into the fray and take over the responsibilities in the Society. We have seen some excellent contributions from our younger members on Council, and their dedication to new portfolios must be commended.

African Journal of Range and Forage Science

Under the editorship of James Bennett, the journal has continued to grow. With a growth in the number of papers submitted, and only a marginal increase in the page numbers, there has been an increase in the rejection rate. With over 100 papers submitted during 2014, and already over 50 for 2015, the journal is once again becoming a force in southern African ecological publishing. We have just been informed that the ISI Impact Factor has increased to 0.971, which is a substantial improvement from the 0.37 of the previous assessment. This is largely due to the efforts of the editors and guest editors who, over the past few years, have put together the most recent special editions on “Aligning policy with the socio-ecological dynamics of rangeland commons” and “Bush encroachment – changes, causes, consequences and cures”. These efforts have certainly focused attention on the journal and increased the impact factor. During 2014 we saw the publication of the special edition “Bush encroachment – changes, causes, consequences and cures” with guest editor

Colleen Seymour. This edition attracted some excellent papers, providing an extremely valuable perspectives on the patterns and processes that help us further understand this very important phenomenon that is prevalent across all our range-lands.

Relating to the significance of our journal and the importance of striving to improve the standard, I quote here from the recent DHET ‘Research Output Policy 2015’

- The purpose of the journal must be to disseminate research results and the content must support high level learning, teaching and research in the relevant subject area;
- Articles accepted for publication in the journal must be peer reviewed;
- At least 75 % of contributions published in the journal must emanate from multiple institutions;
- The journal must have an International Standard Serial Number (ISSN);
- The journal must be published at the frequency it is intended to be published, e.g. quarterly, biannually, annually or biennially;
- The journal must have an editorial board, with more than two-thirds of the editorial board members beyond a single institution, and which is reflective of expertise in the relevant subject area;

- The journal must be distributed beyond a single institution;
- Journals must include English abstracts if their language of publication is not English.

Grassroots

Dr Pieter Swanepoel has done an excellent job in editing Grassroots. We thank him for all the effort at presenting alternative views and to providing syntheses of some of the scientific papers published in the journal.

Website

The appearance and usefulness of the official GSSA website continues to grow, with the addition of the Grassland Research Database, in collaboration with the Society for Range Management in the USA. I am grateful to all those who have contributed over the year to improving the service we offer to our members.

Congress 49 2014

A very successful Congress 49 was hosted by the University of Free State, and held at Philip Saunders Resort. The local Organizing Committee did an excellent job, and the Congress started with a very entertaining and challenging address by the Vice Chancellor of University of the Free State, Prof Jonathan Jansen, who challenged all the members of our Society to do better. In his inimitable style, he managed to criticize every group within our rainbow nation.

Grassroots

November 2015

50th Annual Congress

Research Skills Workshop 2014

The Research Skills Workshop continues to provide an opportunity for young scientists to learn about the skills needed to develop their research careers. Thanks to the co-ordinator, Justin du Toit, and all the contributors who generously donate their time to this initiative.

GSSA Trust

Trust has not been able to meet this year and there has been little progress on their project which is the mentorship program. Pending the decision of the AGM, the current structure of the Trust may change. This decision is required because of the new rules regarding the registration of Trusts with the Master of the Supreme Court. Funds disbursed in 2014/2015 were R 7 500 to assist founding members to attend the Gala Dinner at the 50th Congress in Pietermaritzburg. Approval has been arranged for R20000, and more funds may be used from this allocation.

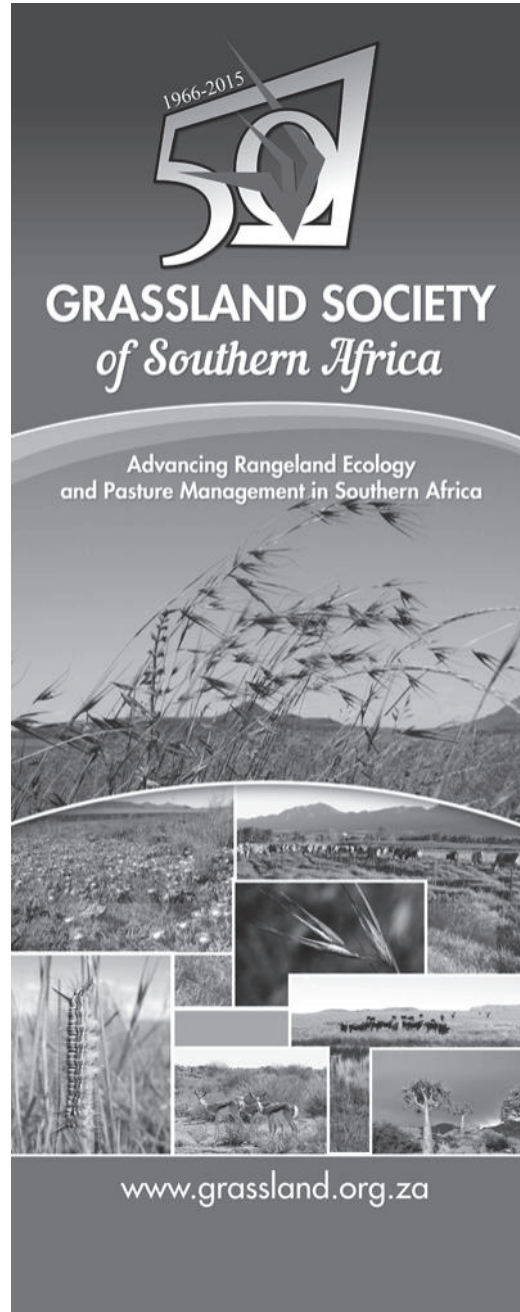
Professional Affairs Committee

The activities of the PAC have been put on hold because of the continued dominance of SACNASP in the registration of science professionals and the requirement from many government departments and agencies that professionals must be registered with SACNASP. Council has therefore decided to remove the portfolio from the Council. Revised Range and Forage Policy for the Department of Agriculture, Forestry and Fisheries. Over a number of years, several members have contributed

Vol. 15 No. 4 10

to developing and improving the Range and Forage Policy for the Department of Agriculture, Forestry and Fisheries. This document is finally being reviewed by SANBI, and the GSSA has once again been invited to participate in the process. A co-ordinated response from several organizations (including the GSSA and the ARC), to the draft policy document, has been submitted to reviewers.

I would like to thank all of those members who have contributed to making the Society what it is today. We are fortunate to have several founding members with us at the Congress this year, and I extend a special thank you to them for joining us in this celebration. These stalwarts have continued to recognize the value of the Society and to remain loyal, serving on committees, editorial boards and organizing workshops. I would like to take this opportunity to thank all those who have supported me during the past year, especially the administrator, councilors and editors.



Mid-Congress Tour Marianhill Landfill and Conservancy

Janet Taylor
KwaZulu-Natal Department of Agriculture and Rural Development
janet.taylor@kzndard.gov.za

This tour was very well attended, considering the rather miserable and rainy day that the weather had prepared for us for our mid congress tours. After a rather long bus trip in the rain, we arrived at the Marianhill Landfill and its conservancy. We were met there by Richard Winn, the horticulturalist, rehabilitation specialist and conservation manager for the conservancy.

Durban Solid Waste pride themselves in their 'closed loop system' landfill design – where everything that has been taken out of the environment is put back again. The effectiveness of this system was soon apparent at our first stop: the 30 ha rehabilitated conservancy. This conservancy was created by using locally sourced, indigenous plants that were germinated from seed or rescued from development areas and grown in the nursery. At the conservancy, we visited a hide overlooking a rehabilitated wetland, where over 100 different bird species have been identified. In addition to these bird species the conservancy is also home to the endangered black headed dwarf chameleon, although we were not lucky enough to see this elusive little creature. Richard explained the challenges of being an urban conservation manager for a savanna area like this, where electricity

servitudes and the methane produced by the landfill meant that no fire can be used to prevent woody plant thickening in the conservancy. The Plant Rescue Unit was a source of great interest for many on our tour when we were shown how the principle of planting a mini ecosystem within each plant packet. Many of the packets contained up to 6 different plant species in one bag. This also makes for easier transplanting at a later stage as well as for increased plant diversity in the rehabilitated site.

We were then directed towards Africa's first landfill Gas to electricity project. Here captured methane emitted by the landfill is converted to electricity and is finally added to the eThekweni power supply. An estimated 2 mega watt hours (mWh) is created daily. This is enough electricity to power approximately 1000 households every day. The leachate treatment plant was our final stop for the tour where delegates were amazed by the brown bubbling mass of landfill leachate in the large Sequencing Batch Reactor. This leachate is highly corrosive and we all made sure not to drop anything into it, with the fear of never getting it back again! Once the leachate has passed through the Reactor, it follows the path to a lined reed bed which removes any residual pollutants.

Once the liquid has passed through here, the water is completely free of toxins and can be used within the landfill property.

Thank you to Richard Winn for sharing his time and knowledge with us on a very interesting trip through the Landfill and Conservancy, and to everyone who braved the gloomy weather to join us on this tour.

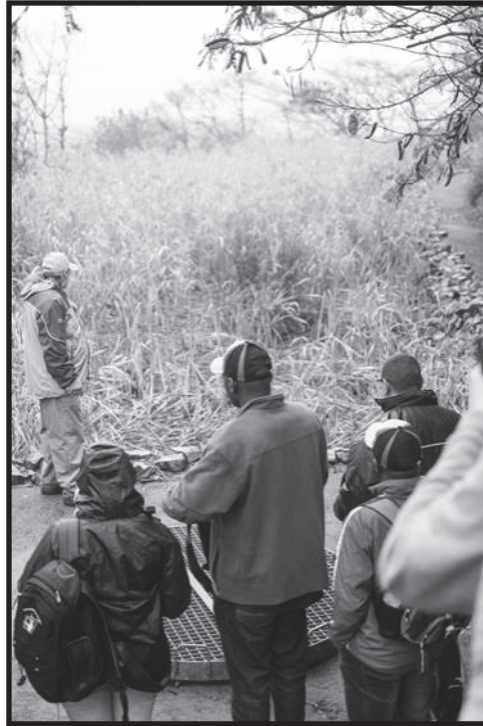


Photo Credits:
Stuart Demmer



Mid-Congress Tour Dairy and Pastures

Derryn Nash

KwaZulu-Natal Department of Agriculture and Rural Development
derryn.nash@kzndard.gov.za

The mid congress pastures tour was quite an exciting affair. The weather was typical Natal Midlands nuisance weather, cold, slightly wet and very misty. The bus and driver were of the doubtful kind with the suspension reminding one of a ship on a particularly rough sea! The steering was little better.

The first port of call (excuse the pun) was Cedara research station where the group was introduced to the new evaluation trials under the government banner. From there it was a short trip to the ARC lands to see their evaluation trials and the long duration Jap radish being bred by the section. The first taste of bus problems was when the door refused to open to allow the group to climb back on. It was with some trepidation that all did eventually reboard when the pneumatic door was persuaded to open and then close again. The mechanic called to meet us to address the problem was never located but thankfully the door did behave for the balance of the trip. The first farm we visited was the dairy farm Denleigh owned by Rene Stubs in the Karkloof. Unfortunately the wet roads precluded the bus delivering the tour group to the destination of choice – the dairy – and the entire party had to squelch through mud on foot for about a kilometre to reach said dairy. The walk took us past Rene's

minimum till maize with winter pastures drilled in and his spectacular maize silage pits. Rene was most well informed and informative and a number of leading questions were asked with regards to his operation of over 1000 Frieslands in milk. After over an hour of standing in the cold it was decided to return to the bus at the bottom of the hill (fortunate members received a lift in the farm bakkie) and head for lunch. Karkloof Country Club was a stone's throw away and the warm coffee and blazing fire was a welcome relief. The lunch of wors rolls and salad was generously sponsored by Capstone seeds.

After lunch the trip was altered as it was plain that the bus would not cope with the planned scenic route through the Karkloof. It was back to Howick on the tar and then out to Fairfield Dairies at Currys Post. We visited the original farm owned by Kevin Lang, the factory has moved off site into Howick. The tour met with Kevin's manager and consultant, a disciple of the Albrecht system. Unfortunately the cold weather dampened the lively debate anticipated and after inspecting a mixed pasture and the silage pits the group repaired to the dairy to have coffee, delicious Fairfield drinking yoghurts and biscuits. The dairy has been built to facilitate watching

50th Annual Congress

milking on the rotary and all had an opportunity to watch Holsteins and Ayershire's being milked. The trip back to Pietermaritzburg was accomplished in heavier rain and it was with gratitude that we all debussed safely back at the show-grounds.

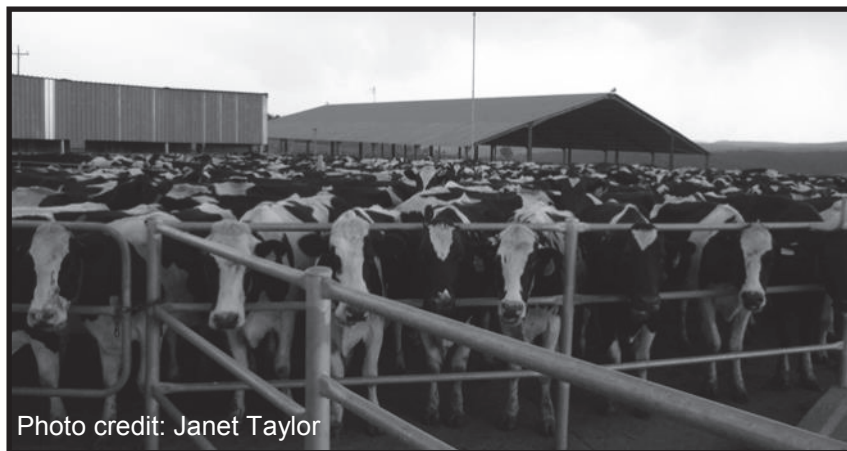




Photo credit: Janet Taylor



Photo credit: Janet Taylor



Photo credit: Sigrun Ammann



Photo credit: Sigrun Ammann



Photo credit: Sigrun Ammann



Congress Delegates Revisit Famed Ukulinga Trials

Sally Frost
University of KwaZulu-Natal
frosts@ukzn.ac.za

During the Grassland Society of Southern Africa's (GSSA) 50th Annual Congress held recently at the Royal Agricultural Showgrounds in Pietermaritzburg, Congress delegates took time to visit the renowned long-running mowing and burning trials and the veld fertilisation trials which were initiated in 1950 and are still being maintained today.

Kevin Kirkman, Professor of Grassland Science and Director of Professional Services in the College of Agriculture, Engineering and Science (CAES) took a group of around 40 visitors from the annual Congress along to the trials and guided them through the unique project. The tour was one of a few mid-Congress tours intended to give delegates an overview of various types of grassland and biodiversity projects underway in KwaZulu-Natal.

'Research conducted on the Ukulinga long-term trials has contributed critically to the core knowledge of sustainable management of humid grassland in South Africa,' said Kirkman. The tour was particularly special, given that the first annual GSSA Congress was held in Pietermaritzburg in 1966, where many Society members at the time were linked to the then-University of Natal, whether as lecturers, students or

collaborators. Two of the tour delegates, Professor Winston Trollope and Mr Koos Kappeyne van de Coppello, were at the University during the 1960's, and had fond memories of time spent at Ukulinga as students. Trollope remarked on how the fire exclusion plots had changed, with distinct bush growth and alien plant invasion.

Professor James Donald Scott, the first Dean of what was then the Faculty of Agriculture, started the trials in 1950, with the veld fertilisation trial set up as the Masters project of Peter Booysen, who would later become a Professor in the Faculty and Vice-Chancellor of the University.

The trials were set up to run indefinitely, and the visitors were impressed with the infrastructure of the trials and the professional manner in which they had been managed. Kirkman commented on the benefits of having delegates visit the trials, saying that attendees had put forward the useful suggestion of a reversal experiment where the veld fertilisation trials are split in half and only half fertilised to observe the effects on nutrient reduction. He added that the visit had sparked conversations about potential collaborative research that could take place.

50th Annual Congress

The trials are still extensively used in teaching and research, with second and third year Biology students doing practicals based on the trials, and a number of Honours, Masters and PhD students undertaking research on site. As for the future of the trials, Kirkman outlined the plans of the Discipline of

Grassland Science to expand the trials' international exposure and recognition through the publication of research papers in prestigious international journals and by registering the trials on the International Long-Term Ecological Research Network (ILTER).



Professor Kevin Kirkman showing GSSA delegates around the Ukulinga trials.
Photo Credit: Ian Rushworth

GSSA Congress 50 Awards

Michelle Tedder
University of KwaZulu-Natal
tedder@ukzn.ac.za

Academic Award

Awarded by individual universities for an outstanding thesis in a grassland science discipline.

Melvin Swarts

Meritorious Awards

This award is made to a member of the GSSA in recognition of exceptional service to the Society.

**Craig Morris
Freyne du Toit**

Prestige Awards

This award is made to the scientist whose work has made a significant impact on range and forage science and/or practice.

Winston & Lynne Trollope

Tim O'Connor

Rob Scott-Shaw (Posthumous award received by his wife Maureen and son Bruce)

Peter Edwards Award

This award is made to a land-user in the area of the annual Congress in recognition of the sound application and practice of the principles of range and forage science and conservation.

Mike and Jeanette Rennie, Palmiet

Runners-up

Cilla Pickering (on behalf of Munyawana Conservancy)

James and Cheryl Kean, Mearns Farm

Best Paper in the AJRFS in 2014

This award is made to the author/s of the best paper published in the African Journal of Range and Forage Science in the preceding year.

Tim O'Connor (with James Puttick & Timm Hoffmann) Bush encroachment in southern Africa: changes and causes published in the 2014 bush encroachment special issue. Received by Tim O'Connor

Best Presentation: Tied between Suzi Vetter and Richard Fynn

Best Presentation by a Young Scientist: Nthuthuko Mkhize

Norman Rethman Planted Pastures

Award: Josef van Wyngaard

Awarded for an outstanding contribution to planted pastures by a young scientist.

Best Research Proposal Poster: Stephanie Lyle

Best Poster: Heinrich Cloete

Faux Pas: Winston Trollope

All Credit for the Awards Photographs goes to Stuart Demmer



Academic Award: Melvin Swarts



Meritorious Award: Craig Morris

50th Annual Congress



Meritorious Award: Freyni du Toit



Runner-up Peter Edwards Award: Cilla Pickering (for Munyawana Game Reserve)



Prestige Award: Tim O'Connor



Prestige Award: Winston and Lynne Trollope



Prestige Award: Rob Scott-Shaw - Received by his wife, Maureen, and son, Bruce

50th Annual Congress



Peter Edwards Award Winners: Michael and Jeanette Rennie



Best Presentation: Suzi Vetter



Best Presentation: Richard Fynn

50th Annual Congress



Runner-up Peter Edwards Award:
James Kean



Best Paper - Tim O'Connor, James
Puttick & Tim Hoffman

50th Annual Congress

Best Poster :
Heinrich Cloete



Faux Pas Award - Winston Trollope

50th Annual Congress



Josef van Wyngaard with the Norman Rethman Award

Grootfontein College of Agriculture Student Award

Minette van Lingen
DAFF - Grootfontein ADI
minettevl@daff.gov.za

The GSSA trophy, together with a certificate, is awarded to a deserving third year Grootfontein student. This award is made to a final year student who achieved the highest marks for rangeland, pasture and environmental management modules, with an average of at least 70 % for all modules. In 2014 this prestigious award was presented to Marno

Mouton during the diploma ceremony at Grootfontein. Marno was an exemplary student and he was the dux student during his first, second and third year and excelled in all other fields within the diploma programme. He is currently enrolled for the B.Tech in Agricultural Management programme at the Central University of Technology in Bloemfontein.



Learner that receives GSSA award also wins Gold at the Eskom Expo

Beanelri Janecke
University of the Free State
janeckbb@ufs.ac.za

The Eskom Expo for Young Scientists is an annual regional science fair at the University of the Free State, Bloemfontein. Learners from schools all over the region exhibited their scientific investigations and mini research projects at the Expo from 14 – 15 August 2015.

Projects with an ecological theme that dealt with a grassland science issue were judged by Dr Beanelri Janecke. The GSSA Award for the Best Ecological Project was awarded to Ané Scholtz, a grade 9 learner from Sand du Plessis High School in Bloemfontein. The title of her project was: Organic fertilizer versus chemical compost. The aim was to determine the best fertilizer for grass seed germination and growth. The learner used bone meal as organic fertilizer and lawn dressing as chemical fertiliser. Three experiments were done: similar quantities of garden soil were mixed in separate containers with either the chemical or the organic fertiliser or with an equal mixture of the two. A similar number of grass lawn seeds (that are known to grow in autumn/winter) were used in each container and each container received an equal quantity of water. Ané quickly realised that she had to redo her

experiment after the first attempt, because these quantities were not kept constant from the beginning. Thereafter, germination success and growth of the grass were determined.

The learner then also contacted three big nurseries in Bloemfontein and enquired which of the fertilisers they found worked best for their plants in the nursery. She then incorporated their findings with her results to make the final conclusion, namely that for the grass, the mixture of the two worked best, while for other plants it differed between different types of plant species. The project contained a series of photographs showing the progress of the grass plants. The learner was very well informed and had good answers for all the questions.

Consequently, this project also won Gold at the Bloemfontein Expo and will be presented at the National Expo! Prof Hennie Snyman and Beanelri Janecke also offered to give some guidance to help this truly excellent project achieve more excellence at the nationals.



Ané Scholtz's science project entitled 'Organic fertilizer versus chemical compost'

A life of global impact on environmental science

Debbi Schultz
Mail & Guardian
newsdesk@mg.co.za

Professor Robert Scholes is one of the top 1 % of environmental scientists in the world. He is recognised globally as a leading researcher within environmental science, systems ecology, savannah ecology and global change. His A-rating by the National Research Foundation provides a starting point in understanding the immense global impact that Scholes has had.

Systems ecology, the approach that underpins the majority of Scholes' work, takes a holistic approach to the study of ecological systems. Most ecologists study individual organisms in relation to the environment, whereas systems ecology addresses large-scale environmental problems and relates them to human needs.

Unravelling savannah ecosystems

The professor's doctoral and post-doctoral work looked at tree-grass interactions in savannahs; it was followed by a book that integrated two decades of savannah research, co-written with Brian Walker. It is still considered a foundational text in savannah ecology.

Savannahs, which dominate Africa, are one of the world's biggest and most important ecosystems. "However, they have posed a problem for ecologists — while trees and grass displace each other in most ecosystems, why do they coexist in savannahs?" says Scholes.

In 1997, Scholes and Steve Archer wrote the seminal review on this issue, which proposed a hybrid equilibrium and disturbance theory. Further to that, Scholes' novel research on the influence of nutrients revealed nutrients to be as important as water in determining savannah function. As part of his work on savannahs, in 1996 Scholes conducted the first elevated carbon dioxide experiment in Africa. Carbon dioxide concentration was artificially boosted to the levels it may reach later this century. In 2000, he established the first eddy covariance tower in savannahs. "It measures the 'breathing in' of carbon dioxide by the Earth's surface during the day and the 'breathing out' at night," explains Scholes. The research around this work has revealed the finer details of savannah ecosystems. Scholes' work on savannah dynamics has significantly influenced the management of ecosystems in South Africa (including national parks), with particular respect to bush encroachment, bush clearing and fire management.

Addressing global change

Scholes was one of the first scientists in Africa to address the issue of global change, starting in 1990. Since then he has published extensively in this field, is considered a leading expert, and has had a key role in drafting national policies, communications and research plans in relation to climate change.

His expertise is also acknowledged globally concerning the impacts of the terrestrial carbon cycle, biodiversity change and impacts on ecosystem services.

“Global change can be thought of as a symptom of disturbance to the carbon metabolism of the world, resulting from massive injections of carbon dioxide from the burning of fossil fuels,” says Scholes. Land ecosystems take up about a quarter of this excess carbon dioxide and oceans take up another quarter, both playing a critical role in controlling climate change. But the question remains — how long can they continue to do so, and at what cost to their normal function?

Scholes co-led the highly influential study of the generation of soot and gases by fires in southern Africa (SAFARI 2000). As a result, he received the NASA group achievement award. He also conducted the first inventories of greenhouse gas emissions from South Africa and Africa.

Scientific assessments for effective environmental decision-making

Among other work for the organisation, Scholes has been a lead author and convening lead author on numerous assessments by the Intergovernmental Panel on Climate Change (IPCC). The IPCC is an international body for the assessment of climate change. It was established in 1988 to provide the world, especially decision-makers, with a clear scientific view on the current state of knowledge in climate change, as well as the potential environmental and socio-economic impacts. Following on from his experience in assessment processes with the IPCC, in 2004 Scholes co-chaired the working group on State and Conditions in the groundbreaking Millennium Ecosystem Assessment (MA).

“The MA did for the rest of the global environmental issues — such as biodiversity loss, overfishing the oceans and desertification — what the IPCC does for climate change,” says Scholes. This has led to a permanent assessment body. The study shows that people’s wellbeing depends on functioning ecosystems. This changed mind-sets worldwide. Further to this, Scholes’ research with student Reinette Biggs provide a new measure called the Biodiversity Intactness Index. This has been adopted as one of the metrics used globally. “It monitors biodiversity change and the research showed that measuring biodiversity loss, which had previously been thought to be impossibly complicated, could be made simple in a rigorous way,” says Scholes.

News

Scholes' work has helped position natural capital globally. He says that natural capital shows that the economic benefits which people derive from ecosystems amounts to trillions of dollars worldwide, arguably equal to or greater than the financial capital usually considered as a metric of wellbeing. The concept allows for better informed decision-making — for example that development pathways, which disproportionately impair natural capital, are ill-advised and unsustainable. The advantage of this methodology is that ecosystem services can now compete when economic decisions are made.

Earth observing systems

Scholes has worked for two decades on the design and implementation of Earth observing systems, which monitor the health of the planet. He was chair of the Global Terrestrial Observing System and served on the Global Climate Observing System. He was one of four scientists worldwide appointed to draft the implementation plan for the Global Earth Observation System of Systems (GEOSS) in 2004.

He is part of the team drafting the implementation plan for the second decade of the Group on Earth Observation (GEO). Considered a “system of systems” and one of the early applications of Big Data, the aim of GEOSS is to link Earth observation resources worldwide across nine societal benefit areas (such as biodiversity). The intention is to make the data available for informed decision-making.

As part of the work done with GEOSS, Scholes founded and, until recently, chaired the GEO Biodiversity Observation Network. He wrote the plan for the South African Earth Observation System, served on the founding steering committee of the South African Environmental Observation Network, and was on the inaugural board of the South African Space Agency.

Beyond the work mentioned above, Scholes is or has been a member of the steering committee of several International Council of Scientific Unions research programmes. He is also a fellow of the Council for Scientific and Industrial Research (CSIR), fellow of the Royal Society of South Africa, member of the South African Academy, and a foreign associate of the US National Academy of Sciences. Having left his previous position as a CSIR research group leader at the end of 2014, Scholes is currently a distinguished professor of systems ecology at the University of the Witwatersrand. He says he intends to spend the last decade of his formal working career dedicating more time to training the next generation of systems ecologists. Scholes is also currently working on food security in relation to global change, as well as the problem of detecting, understanding, avoiding and fixing land degradation worldwide. With the upcoming United Nations Climate Change Conference, Scholes says that it is now “crunch time” and that substantial action needs to be taken. “If this is not done, it will be hard to avoid substantial warming,” he notes.

Ecosystem Management Understanding

Ken Tinley and Hugh Pringle
EMU - Ecosystem Management Understanding
hpringle1@bigpond.com

Unlike the large flightless bird this EMU had its origins in South Africa. Elder/founder Ken Tinley was born and brought up on a farm in Zululand and later became a game ranger in the Zululand parks. During these years he developed a deep respect for the tribal people's knowledge of their land and natural resources. Ken went on to become a proficient landscape ecologist, later with a DSc in ecology and natural resource management based on his surveys and research of the Gorongosa National Park system in Mozambique.

After 24 years of experience working in big game national parks and game ranches, coasts, lakes and river systems across Southern Africa, Ken and his family migrated to Western Australia. Here initially as head of Land Resources Branch in the Dept of Conservation & Environment he was involved in the ecological assessment and management required of the coasts, drainage systems and rangelands. Later in 2000 he met up with an ex-Zimbabwean, Dr Hugh Pringle, whose family is originally from the Eastern Cape's Tarkastad area in South Africa. Hugh was a bright, enthusiastic young man – about 30 years Ken's junior - with a background in geomorphology,

biogeography as well as many years as an ecologist surveying and assessing ecological conditions of the rangelands in Western Australia involving plant collections, mapping of land systems and refining grazing management strategies.

In the year 2000, as part of a Federally funded rural reconstruction program Ken and Hugh formed an ecological extension process working together with pastoralists on their vast stock stations to (a) entrain ecologically sustainable management practices, that (b) included biodiversity conservation. They named the process Ecosystem Management Understanding – and the acronym EMU fitted in very well in celebrating the bird's ecological role of seed dispersal over the vast landscapes of Australia.

EMU is active in commercial and communal lands across Australia and in Namibia. Hugh is currently busy working with Herero and Himba rural communities in Kunene, alongside Namibian colleagues from Conservation, Agriculture, and the Polytechnic of Namibia. This is yet another example of how EMU returns to its roots as Ken was one of the first ecologists in what was then South West Africa.

News

EMU is essentially a land management extension program for pastoralists and other land users to enhance the health and productivity of their land. Land users are introduced to the ecological management of landscapes and habitats by learning to recognize and read landscape processes, condition and trend, and to capture rain-water onsite.

EMU workshops bring together communities or landcare groups who share the same catchment areas. Participants initially record their knowledge of their own land in an overlay mapping exercise, pinpointing water points, eroded areas, best grazing etc. This is followed by an aerial overview from a light aircraft and/or Google Earth and the key areas and issues identified by the mapping process and the flight are visited on the ground to identify the best management strategy to fit the particularities of place.

Rainwater capture, erosion control, monitoring strategies, grazing management and fire are issues frequently discussed in the workshops and out in the field, and knowledge is shared by participants and facilitators.

The EMU workshops are held on pastoral stations/ranches or rural land-use areas where participants attend voluntarily and are facilitated by trained EMU members. The facilitators visit the same areas for follow-up sessions and further training if needed.

EMU's main goal is to build socio-ecological resilience in land users (individually and as local communities) through the use of their knowledge of their land, their capacity to adapt, and their willingness to work with the natural processes towards recovery of habitats and biodiversity.

The program's ultimate success occurs when pastoralists/managers rarely require extension help and instead help guide other managers in mapping their knowledge and learning how to recognize and interpret the signs of their land for recovery and maintenance purposes towards attaining a viable Triple Bottom Line.

The website for EMU has recently been revised and redesigned by Lynne Tinley. Pdfs of the Rangeland Rehydration Manual and Field Guide plus other relevant articles are available for downloading free from the website.

See our website:
www.emulandrecovery.org.au



What South African farmers can do to protect endangered grassland birds

Rob Little¹ and Ian Little²

¹DST-NRF Centre of Excellence in Birds as Keys to Biodiversity Conservation

²Endangered Wildlife Trust - Threatened Grasslands Programme

¹rob.little@uct.ac.za, ²ianl@ewt.org.za

Current livestock farming practices in South Africa threaten endangered birds. South Africa is not unique. Globally, the intensification and expansion of agriculture has led to the reduction of bird communities. These farming practices centre around the annual burning of grasslands, which are one of the most diverse ecosystems in South Africa. They support 12 of the 40 endemic birds, five of which are globally threatened. South Africa's grasslands host five RAMSAR wetland sites. RAMSAR is the convention on wetlands. It is an intergovernmental treaty that provides the framework for national action and international co-operation for the conservation and wise use of wetlands and their resources.

These grasslands, including the wetlands, comprise around 16.5 % of South Africa's land surface. They are one of the most threatened ecosystems. More than 60 % of the grasslands have been irreversibly transformed by agricultural cultivation and forestry and only 2.8 % are formally protected. Moist highland grasslands in South Africa, of which only 1.5 % are conserved, were historically maintained by winter and spring fires. This was probably done at intervals of four years or more, and by summer grazing by migratory, medium-sized antelope.

Today these grasslands are managed by livestock farmers, who in most areas burn annually at the start of the rainy season, in early summer. This coincides with the onset of the breeding season for birds. The two major drivers of grassland disturbance, fire and grazing, have therefore been altered dramatically.

All is not lost. Changes to agricultural practices can provide surrogate habitats for certain bird species without compromising the economics of livestock farming. Simple changes to current management could translate into immediate biodiversity benefits without compromising the economics of livestock farming. If managers burn biennially or every three years in a patchwork – so that their farms contain grasslands of different ages – biodiversity benefits will be demonstrable and immediate.

The effects of fire

Research set out to understand how fire and grazing interact to influence communities of plants, invertebrates and ultimately birds. The project included a nature reserve, various farming practices and communal lands that lack a managed fire regime. In terms of vegetation quality, burn frequency has an overriding

effect. Both plant species diversity and vegetation structure are negatively impacted by annual burning. Also, a combination of frequent fires and heavy grazing can result in a low, lawn-like sward.

Communal lands look much the same, even though fires are not managed, simply because grazing pressure is so high. Frequent burning also affects the diversity of invertebrates, with diversity being lowest in annually burned areas. However, in terms of food for birds, the pattern is somewhat different. Grasshoppers, which are the favoured food for many insectivorous birds, dominate the invertebrate fauna. They also respond positively to burning, and are most abundant at sites that have been burned in early summer, reaching peak abundance towards late summer.

The conundrum for birds

The different responses of vegetation and invertebrates to management practices create a conundrum for birds. Food is most abundant in areas burned in that breeding season, yet the short grass sward provides little concealment for nests. Most birds who feed in these areas nest there as well. If birds aggregate where food is abundant, then bird density may not mirror reproductive success, because nests in these sites are easily located by predators. In other words, bird density may not send an honest signal of bird performance. These grasslands are rich in predators, with snakes being the main predators of eggs and chicks.

News

Following more than 400 nests of grassland birds, we found that nest-site selection and nest success are driven by vegetation structure, which itself is driven by management. For birds that build cup nests on the ground, nest success rates increase through the season. This is because predation rates fall as vegetation grows. Incorporating plant, insect and bird diversity data in analyses, we confirmed the importance of conserved areas for birds in moist highland grasslands.

We showed unequivocally that current farm management practices have significant negative repercussions for bird abundance, species richness, nest density and fledgling output. We can further confirm that the increasingly popular use of “holistic” grazing practices in intact high altitude grassland systems has a significant detrimental effect on all grassland biodiversity.



Stop bugging the bugs: the world as we know it would fall apart without them

Pia Addison

Department of Conservation Ecology and Entomology - Stellenbosch University
pia@sun.ac.za

Just under one million insect species have been identified on the planet. Global insect species diversity makes up more than half of all other species diversity on earth. Estimates of actual species richness range from a realistic four to six million to an extravagant 80 million species. But insects are continuously evolving, so we will never really know.

Insects are characterised by having three pairs of legs, two pairs of wings – which are sometimes reduced or absent – and three body segments: the head, thorax and abdomen. And they change their appearance during development in a process known as metamorphosis.

If all the insects on the planet were put together they would weigh more than humans put together. It is estimated that total insect biomass is 300 times greater than total human biomass. Ants and termites alone are estimated to weigh more than humans. These are estimates – insect biomass measures can be contentious because solid data are scarce.

There are many things that humans take for granted that would be affected if there were no insects.

Bugs hold the food chain together

Our total food supply would be severely restricted without insects. We would suffer from a variety of deficiencies as we would have very little fresh fruit and vegetables to eat. Insects are pollinators and many crop yields would suffer if they didn't exist. Certain products like silk and honey would simply not exist.

The food chain would diminish. There would be no birds, or any other animals that rely on insects as food. The world would be littered with decomposing organic material. The consequence would be complete degradation of our soils. All remaining life would subsequently disappear. If that was not enough and if we were still alive, creativity would suffer. Insects are an inspiration for artists, for movies and documentaries. They are studied by engineers and scientists to find out how we can be more sustainable and efficient in our everyday lives.

Survival mechanisms

The smallest insect is a parasitic wasp, measuring in at a staggering 139 micrometres. Like so many insects it is not visible to the naked eye. Insects can be

found in seeds, grasses, flowering plants or soil, or they could be parasitising the insects that feed on the plants. You would then find other insects parasitising the insects that parasitise the plant eaters.

Insects are highly adaptable to environmental change and have well-structured sensory systems, comparable to vertebrates. Due to their short life cycles vinegar flies, aphids and mosquitoes can complete their entire life cycle, from egg to adult, in less than seven days. They are able to respond to change much faster than animals with longer life stages. That is why insects can become resistant to insecticides so quickly. The housefly developed resistance to the insecticide DDT in 1947 eight years after it was developed for the first time. Today, insecticide resistance is developing much faster due to the large variety of chemistry that insects are exposed to providing increasing selection pressures.

The cleverest trick of them all

Insects are well known for having intricate relationships with plants and with other insects. As the plants change, so do they. This co-evolution has been going on for about 360 million years when the first insects evolved. This is considerably longer than the first humans *Homo erectus* evolved, some two million years ago. That many insects can fly is a major asset. They can disperse quicker, get out of danger faster and reach food sources more efficiently. The fastest wing beat in an insect – a midge – has been recorded at 1046 beats persecond, attributed to asynchronous muscle contractions.

News

In comparison, the fastest wing beat of a bird (the hummingbird) is 55 beats per second. The fastest flier is a horsefly, clocking 145km/hour. Insects have external not internal skeletons. Their hard armour serves as a point for muscle attachment, protects them from drying out and from toxins getting into their systems. For heavily sclerotised insects – like beetles, which are among the most successful insects – the external skeleton also protects them from predation.

Beetles exhibit probably the highest diversity of all insects, the reason for which still remains a riddle. Spines and other strange designs offer defence mechanisms and camouflage. Lastly insects are able to drastically change their appearance during their development. Immature stages of butterflies look like worms. They then become a pupae, while the adult is winged. Adult butterflies and moths rarely feed, often only taking in small amounts of water or nectar.

Many adult insects do not possess mouth parts at all. The evolutionary advantage of this is that adults do not compete with their offspring for food and therefore exploit different habitats, providing a reproductive advantage.

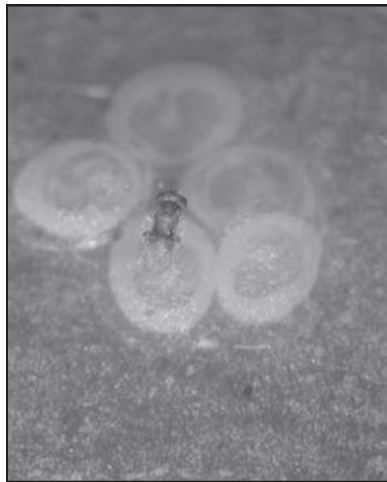
THE CONVERSATION AFRICA PILOT
Academic rigour, journalistic flair



Insects are key to holding the food chain together. Without them, much of what we eat today would not exist. Photo credit: Pia Addison



Ants and termites play a key role in the world we live in.
Photo credit: Pia Addison



Parasitic wasp sitting on
a codling moth egg
(which measures about
1mm across). Photo
credit: Nadine Wahner

Havoc among bee pollinators - effects on agriculture and conservation

Robin Crewe

Centre for Advancement of Scholarship / Social Insects Research Group (SIRG)
crewe@up.ac.za

Understanding the threat to bee pollinators requires a brief look backwards to the origins of bees and flowering plants. The insects that we now call bees started to diverge from their wasp ancestors about 100 Ma (million years ago) at the same time (123 Ma) that the flowering plants were diversifying. The key characteristic that drove the emergence of a diversity of bees from their wasp ancestors was the switch from a carnivorous diet (characteristic of most wasps) to a strictly vegan diet that consists exclusively of the nectar and pollen supplied by the flowering plants.

The intersection of plant diversification and bee diversification has produced a world in which flowering plants dominate landscapes with some 325 000 species and the bees that contribute to their pollination are a very diverse group of insects with some > 20 000 species present on all continents except Antarctica. Of this vast array of bee species only some 300 are social and only 9 - 10 species are honey bees.

The world in which humans evolved has been one in which flowering plants dominated landscapes and the most abundant bee was the western honey bee, a highly social species with relatively large

colonies (> 20 000 workers). So our interest in bees tends to focus on the western honey bee with its large colonies and its recognised importance for agriculture.

We seldom recognise that the wonderful landscapes that we delight in, such as the fynbos of the Western Cape, with high diversity of flowering plants also have a high diversity of bee species. In the case of agriculture, it is primarily the western honey bee that provides the pollination services on which much of our agricultural production depends.

Given that bees have played a major role in structuring landscapes for more than 100 Ma, what has happened in the last 100 years that has given rise to our anxiety about the health of bee populations and the realisation of our dependence on their wellbeing? The large-scale modification of landscapes as a result of human population growth has resulted in the destruction of the areas that support flowering plants and their associated bees.

Furthermore, the intensification of agricultural production, besides contributing to landscape modification, has resulted in the industrialisation of both agricultural and the management of honey bee colonies in apiaries.

News

This combination has produced a world in which the populations of unmanaged bee species are being affected by agriculture through the disruption of their natural landscapes and through the negative effects of pesticides on these populations. Although we know that these effects are real, our difficulty is that there is very little data about the distribution and density of all these bee species and their ability to withstand the changes that they experience as a result of human activities. In the case of honey bees, their management on a large scale has resulted in providing ideal conditions for the spread of diseases and their intensive use in agriculture has resulted in increased exposure to pesticides.

The honey bees have become a component of agricultural production on which human populations depend for their food security. It is not so much the bee products of honey and wax that are important, but the pollination services that the bees provide. Globally, the value of this pollination service is estimated at R 7 080 billion, while in South Africa it is estimated at a more modest R 20 billion. The pollination service provided by the bees is not just a significant industry, but our wellbeing depends on it.

Given this scenario about bees, what should we be doing? We should be undertaking surveys of the all bee species in order to determine how they are responding to the challenges of human development; we should be surveying the South African honey bee population to determine whether it is able to sustain the current beekeeping industry; and we should be characterising the diseases of bees and the effects of pesticides on our bees so that we can ensure that we maintain healthy populations for sustainable agriculture and for thriving natural landscapes.



UNIVERSITEIT VAN PRETORIA
UNIVERSITY OF PRETORIA
YUNIBESITHI YA PRETORIA

SIRG
Social Insects Research Group





Bees used in the pollination of canola (Photo credit: Jaco Wolfaard)



A honey bee on a flower (Photo credit: Robin Crewe)

SAEON launches Karoo Shale Gas Ecology Project

Simon Todd¹ and Joh Henschel²

SAEON - Arid Lands Node

¹simon.todd@3foxes.co.za

²henschel@saeon.ac.za

With the prospect of shale gas development looming across large parts of the country, the potential environmental costs are high on many people's mind, with all manner of environmental disaster being associated with 'fracking'. Ultimately, the controversy around shale gas development stems from the extremely rapid growth of the industry, which has outpaced both research and legislation across the world. As a result, shale gas development impacts are not well known, with well-researched studies only starting to emerge now.

Urgent research is required

Our current poor understanding limits our ability to manage shale gas impacts effectively, or even predict what these are likely to be, and urgent research into the impacts of shale gas development on the Karoo is required. In South Africa we are fortunate to have an opportunity to establish a research and monitoring programme for shale gas impacts before development commences in order to address these needs. With this in mind, SAEON has launched the Karoo Shale Gas Ecology Project out of the Arid Lands Node, with seed funding from the

National Research Foundation (NRF). The timing of this has been ideal as the project has been able to link up with a number of other initiatives currently happening in the Karoo, including the Strategic Environmental Assessment (SEA) for Shale Gas Development. SAEON's Karoo Shale Gas Ecology Project will be participating with the Council for Scientific and Industrial Research (CSIR) and the South African National Biodiversity Institute (SANBI) on the SEA, providing a variety of inputs for the process including training and vegetation mapping. The project will also be operating independently, developing a baseline of the Karoo environment, ecosystem structure, function and process with an eye to predicting sensitive receiving habitats and species likely to be most vulnerable to shale gas development impacts.

Long-term monitoring protocol

Ultimately the project aims to develop a long-term monitoring protocol for shale gas impacts that can be rolled out across the Karoo as the zones where wells will be developed become clear. We anticipate that we will also be using conservation areas and protected environments such as the SKA to develop control and benchmarks sites.

News

Although the monitoring sites will be aimed at assessing shale gas development impacts, this will involve a lot of baseline data collection, which will help address

the paucity of biological data collection prevalent across most of the Karoo, as well as address many other potential questions.



The project will develop a baseline of the Karoo environment, ecosystem structure and function with an eye to predicting sensitive species and habitats likely to be most vulnerable to shale gas development impacts. (photo credit: Simon Todd)



SAEON scientists anticipate that they will use conservation areas and protected environments such as the SKA to develop control and benchmarks sites. (photo credit: Simon Todd)

Farmers hold the key to nature conservation: let's treat them that way

Falko Buschke
Centre for Environmental Management University of the Free State
buschkeft@ufs.ac.za

The town of Bethlehem in the Free State Province, South Africa, gets its name from the Hebrew words "Beit lechem" - house of bread. It is a fitting name for a town nestled within a patchwork of privately-owned commercial farmland. Much can be learnt here about the challenges farmers face when conserving nature.

Although renowned for producing wheat, Bethlehem is also an important habitat for hundreds of bird species, some of which are threatened by extinction. Bird watchers have spotted 257 different species in a 9 km by 9 km area just south of the town. This is only eight species fewer than on the entire island of Madagascar. BirdLife International even recognises the region as the Rooiberge-Riemland Important Bird and Biodiversity Area.

Exposing nature to agriculture

This small corner of Africa typifies what is happening worldwide. Agriculture is the single largest user of land globally, with cultivated land and permanent pasture already covering 38 % of the ice-free parts of our planet. In South Africa, farmers are responsible for 80 % of the total surface area, of which 11 % has arable potential and the rest is used for grazing.

As these percentages increase, so too will the number of species living in or around agricultural landscapes. To have any chance of coaxing these species back from the brink of extinction we must reconcile the pressures of food production with the need for nature conservation.

What are the options?

Farmers can potentially reduce their impact on nature by using wildlife-friendly farming methods. Such methods attempt to maintain natural habitat across the cultivated landscape, plant a variety of crops in smaller patches and minimise the use of chemical pesticides and fertilisers. This strategy is known as land-sharing because it assumes that agriculture and conservation share the land for their separate purposes. The downside of land-sharing is that it tends to reduce agricultural yields per unit area. To compensate for such reductions, farmers need to increase the area under cultivation to meet the demand for food. Thus, land-sharing generally exposes more species to agricultural activities.

A second strategy

Farmers can increase their yield per unit area by producing monocultures on

larger individual fields and liberally applying pesticides and fertilisers. In doing so, they can produce more food while maintaining, or even reducing, the area under cultivation. This limits the number of species exposed to agricultural impacts. This strategy is called land-sparing because it aims to prevent conversion of natural habitat by increasing yields on existing farmland.

A delicate trade-off

Land-sparing and land-sharing are two extremes of a continuum, so it is possible to use a mixture of both approaches. For instance, large monoculture fields (a feature of land-sparing), can be separated by corridors of natural grassland (a feature of land-sharing). The contrast between land-sparing and land-sharing creates an easy-to-understand starting point for discussing the trade-off between food production and nature conservation.

Are we getting it right?

Unfortunately, if we consider a recent policy proposal, South Africa seems to be ignoring these potential trade-offs. The draft Preservation and Development of Agricultural Land Framework Bill effectively commits farmers to the land-sparing approach. Even though the draft bill states that sustainable agriculture must complement ecological and biodiversity conservation, it also promises to entangle farmers in new regulations.

Sending the wrong message

To illustrate the suffocating nature of

these proposed regulations, imagine a farm near Bethlehem that happens to be a breeding site for the endangered grey crowned crane. This bird regularly forages in agricultural land. The bill does not provide farmers with the correct incentives to conserve these birds. Agriculturally there is no benefit for them. Section 7 of the draft bill states that farmers will have to apply, at their own expense, to use high potential cropping land for conservation. Such an application requires an agro-ecosystem report compiled by a registered agricultural specialist. Moreover, according to section 54(3) of the draft bill, if farmers ignore these regulations and fail to use the land “for active agricultural production on a continuous basis over a period of at least 3 years” they risk having their land expropriated “at a lower price than would be paid for similar land in the same geographical area which is used optimally”.

No farmer would risk their livelihood in this scenario for the sake of conservation. Such policies ultimately consign species, like the grey crowned crane, to formally-protected areas. This is particularly concerning for the Rooiberge-Riemland Important Bird and Biodiversity Area near Bethlehem – and for other areas like it – which relies completely on conservation in agricultural landscapes. Whether the bill will be accepted by parliament remains to be seen. Nevertheless, the situation in Bethlehem illustrates the important role agriculture plays in conserving nature. By ignoring this role, we risk creating one-sided policies that jeopardise our constitutional right to prevent ecological degradation and promote conservation.

UKZN Hosts second PMA agri-food career fair

Christine Cuenod
Friends of UKZN Agriculture
cuenod@ukzn.ac.za

On the 26th of August, UKZN's Life Science and Agriculture campus in Pietermaritzburg saw the second installment of the annual Agri-Food Career Fair organised by the Produce Marketing Association (PMA Foundation for Industry Talent). The Fair provided a unique opportunity for high school learners and University students to get a look into what a career in agriculture will actually entail, from production of food and agricultural products to supply chain management and marketing. The Fair has been instituted in response to recognition by industry that agriculture is regarded as an unpopular career choice due to misconceptions about what a career in agriculture would involve. Many young people who would thrive in the agri-food industry are not being informed of their prospects in the field because of these misconceptions about the industry, creating a gap in this sector. Together with leading agricultural and life science departments at universities across the country, the Produce Marketing Association (PMA) Foundation hopes to challenge this trend by presenting a professional, realistic view of careers in agriculture. This Fair is one of only three held annually at universities in South Africa, and included a Teachers' Lunch where high school teachers were encouraged to promote careers in agriculture to their students.

At the Lunch, Ms Tracey Campbell of Subtrop and Ms Rechi Dlamini of the Agribusiness Development Agency gave insightful presentations about the career options in agriculture to high school teachers. The Lunch also included the showing of a very useful video made by the PMA Foundation in South Africa with support from AgriSETA about careers in the agri-food supply chain, from seed to plate. More than 300 high school learners attended the Fair, with schools like Silver Heights Secondary, Northbury Park Secondary, Siyanda High School, Phayiphini High School, Nyonithwele High School, Emzameni High School, Makholwa High School and Willowfontein High School represented. Teachers from all of these schools as well as from Maritzburg College, Pietermaritzburg Girls' High School and Epworth School joined the Teachers' Lunch.

A number of companies, institutions and organisations lent their support to ensure that the Fair was a success. The Fair included displays by Fruit South Africa, SANSOR, Cedara College of Agriculture, ZZZ, the South African Institute of Agricultural Engineers (SAIAE), RCL Foods, Syngenta, South African Sugarcane Research Institute (SASRI), Potatoes SA, the Seedling Growers' Association of South Africa, the Agricultural Research Council and the University of KwaZulu-Natal.



Photo credits:
Christine Cuenod



The impact of savanna fires on Africa's rainfall patterns

Michael Tosca
NASA / University of California
Jet Propulsion Laboratory
michael.g.tosca@jpl.nasa.gov

Beginning in late October the steady summer rains of the north African savanna abate, and subsistence farmers begin the millennia-old tradition of burning the savanna and open woodland for pastoral land clearing and shifting cultivation. These fires are very common. Africa's savanna fires comprise the largest proportion (71 %) of areas burned globally and the trees, shrubs and grasses are well adapted to fire.

However, prior to human settlement, the majority of fires occurred during the summer wet season, when natural ignitions from lightning dominated the fire regime. But with the progression of civilisation from nomadic times to one where agriculture is so important, the fire regime and use of fire for crops has changed drastically. Now, most fires occur during the dry season as a direct consequence of agropastoral ignitions.

These fires, which burn continuously from late November through early March, emit massive amounts of microscopic particulates, otherwise known as smoke. Some estimates suggest that emissions of elemental carbon exceed 400 million tonnes annually, 6.7 million of which are emitted

as microscopic particulates. Of particular importance are the 375 000 tonnes that are emitted as dark particulates known as black carbon, which efficiently absorbs sunlight and interacts with clouds and climate in numerous ways.

Research shows that smoke has climatic implications which are not innocuous. A recent study of a region in China is one such example. It concludes that suppression of rainfall near the source of industrial smoke emissions caused the non-precipitated moisture to relocate to a nearby mountainous area. This led to dangerous, flooding rains on the mountain slopes. Globally previous research shows that emissions of smoke from fires can disrupt the large-scale Hadley Circulation that delivers rain to the tropics and dry weather to the deserts. In research recently published, we explore this question in more detail. We used satellite measurements from the Multi-angle Imaging Spectroradiometer and the Moderate Resolution Imaging Spectrometer to determine whether human modification of Africa's fire regime has unforeseen effects on regional climate.

We found that four-day periods of very low cloud cover coincided with spikes in both fire ignitions and fire emissions. This suggests the existence of a positive feedback loop, whereby fires limit rainfall and reduce cloud cover. This dries and warms the surface and makes it easier for farmers to burn and fires to spread. Over time, the increased burning could extend the dry season.

How smoke influences rainfall

The relationship between smoke and rainfall is complicated. The formation of clouds requires microscopic particulates that provide a solid surface on which atmospheric water vapour can condense. Based on this, it seems that smoke should facilitate cloud formation and rainfall. But the development of rain clouds in this region occurs primarily via convection, which is a meteorological process determined by the vertical mixing of air.

Smoke from fires contains a high percentage of black carbon particulates, one type of aerosol. These aerosols efficiently absorb sunlight much like the Earth's surface does on a hot afternoon. As the suspended aerosols absorb sunlight, they heat the air and create a warm layer that prevents air from the Earth's warmed surface from rising above it. Our research shows that, as a result of the black carbon heating, the upward motion of air necessary to fuel convection diminished and produced a notable suppression of rainfall in the region. Across all of the thousands of data points analysed, daytime convection was less in smoky scenes than in non-polluted scenes.

Feature

This was even after extensively accounting for meteorological conditions.

The unknowns

The fire-driven reduction in rainfall has immediate implications for the fire regime. Besides the obvious impacts on surface temperature (it would get warmer), precipitation (it would get drier) and climate (it would change the global distribution of rainfall), the reduction in rainfall could also influence the local ignition and spread of fire.

What are the implications of this continent-scale positive feedback loop on global climate warming, and is there any way to preserve the millennia-old burning practices of farmers while still considering the massive effect on climate? These are unanswered questions that we still hope to explore.

